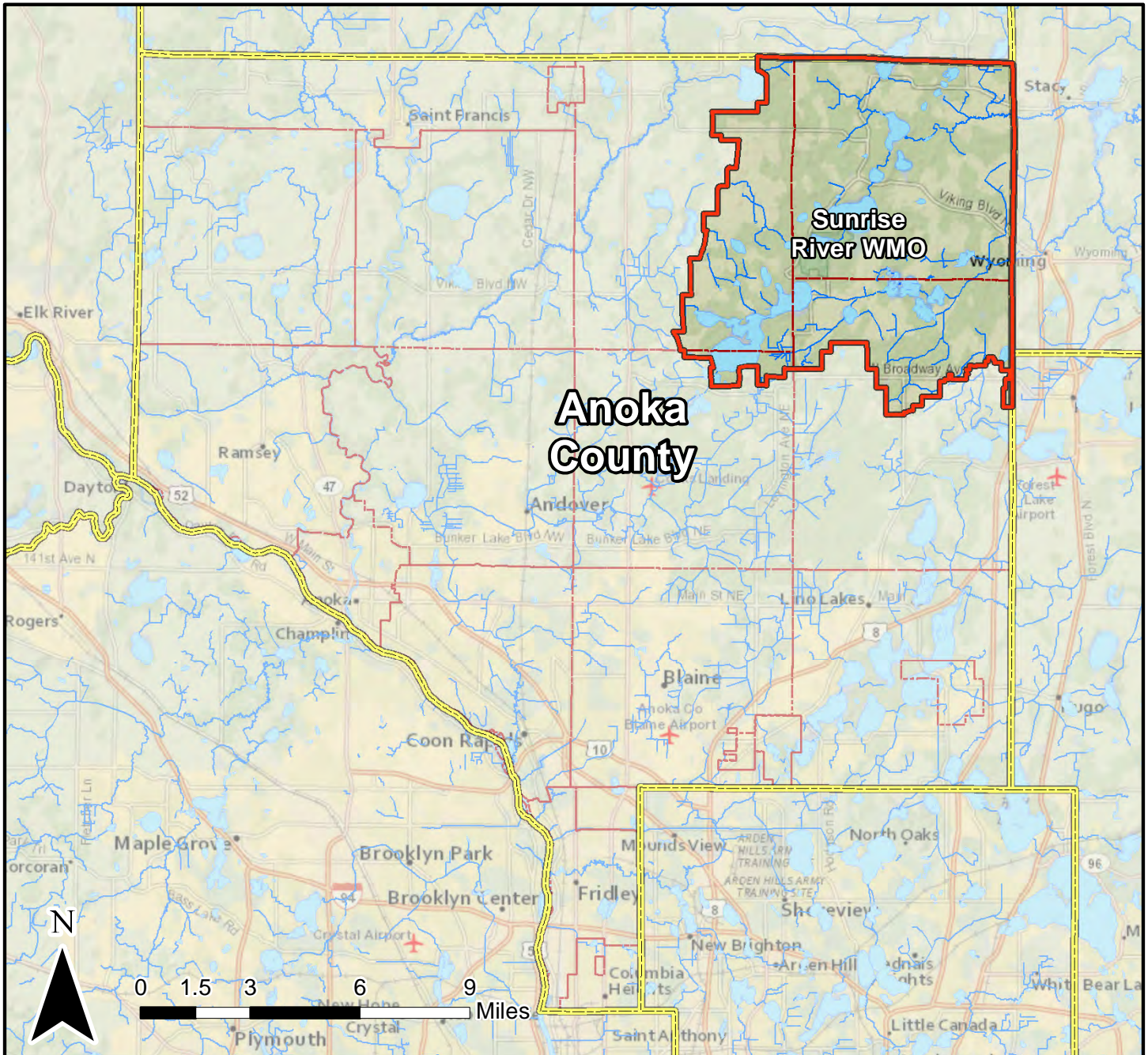


Map 1: Location



Sunrise River WMO

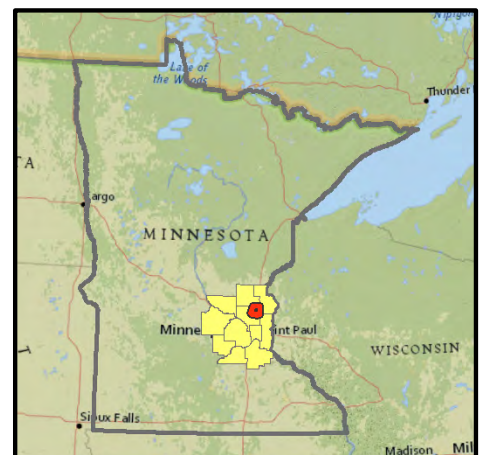


Cities

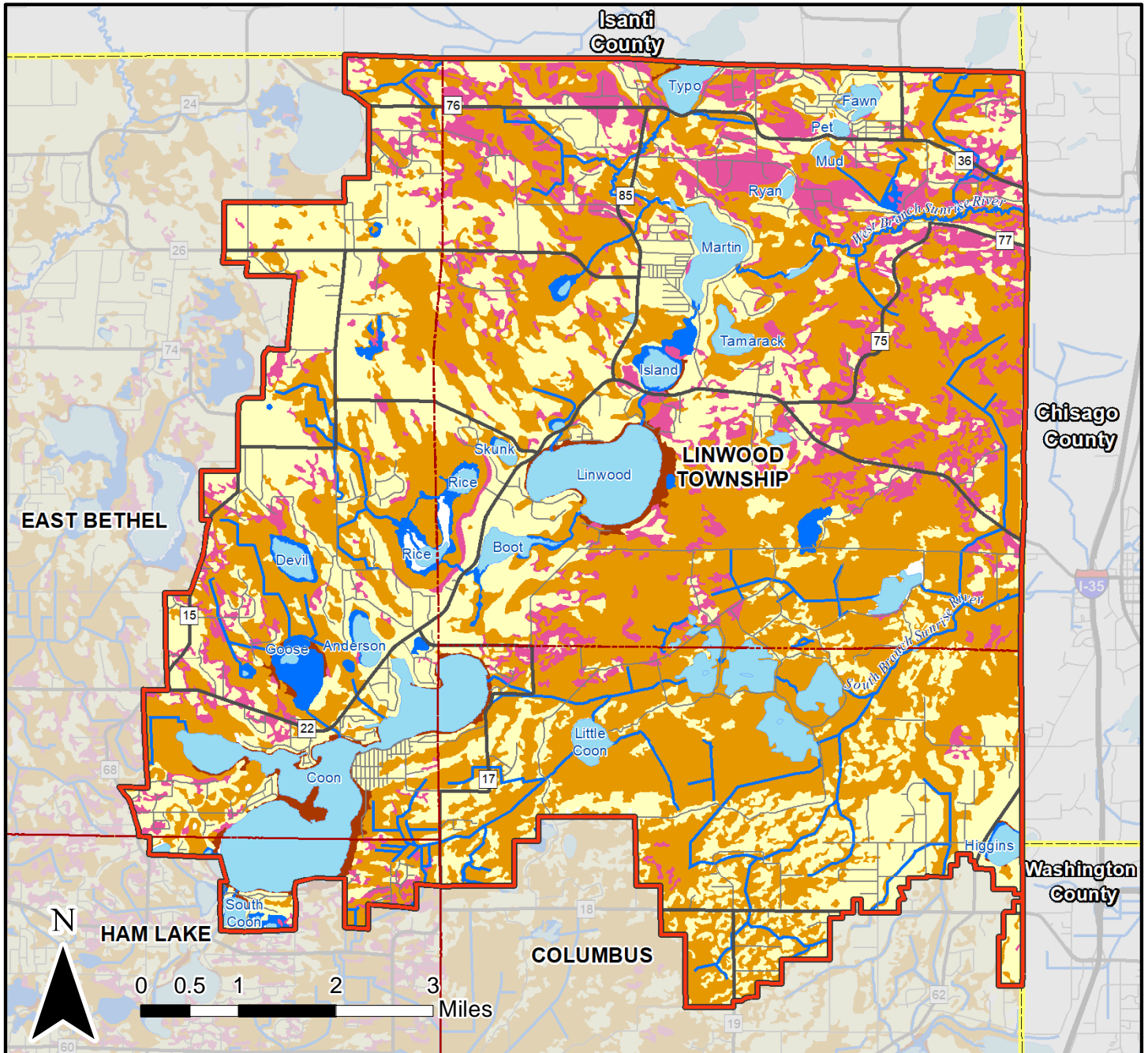
Map 1

Sources:
National Geographic World Map
USGS National Hydrography Dataset, 2018

This is a reference map that depicts information compiled from several sources and its completeness or total accuracy cannot be guaranteed. If there are any questions, please contact the Anoka Conservation District at (763) 434-2030.



Map 3: Soils



Sunrise River WMO

Cities

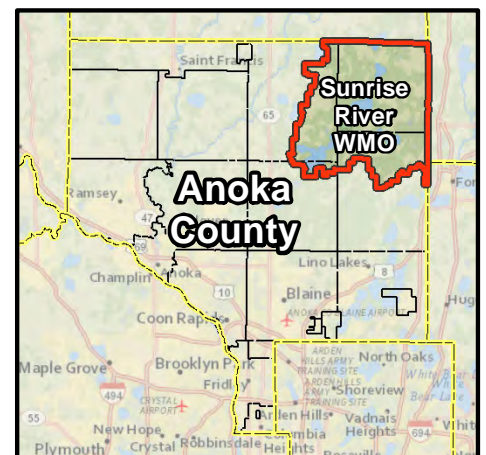
Anoka County Soils

- Zimmerman; Sartell; Soderville; Nymore
- Lino; Anoka
- Isanti; Rifle; Markey; Seelyeville; Millerville; Lupton
- Lake Beaches
- Loamy wet land; Marsh

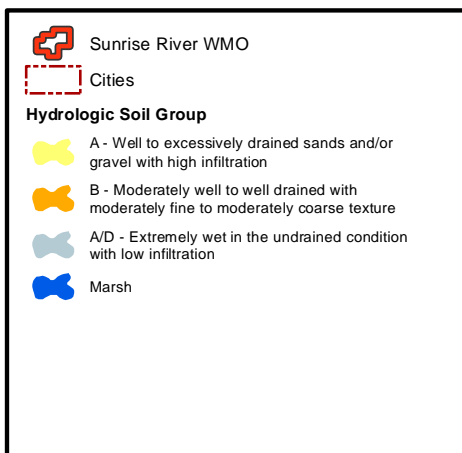
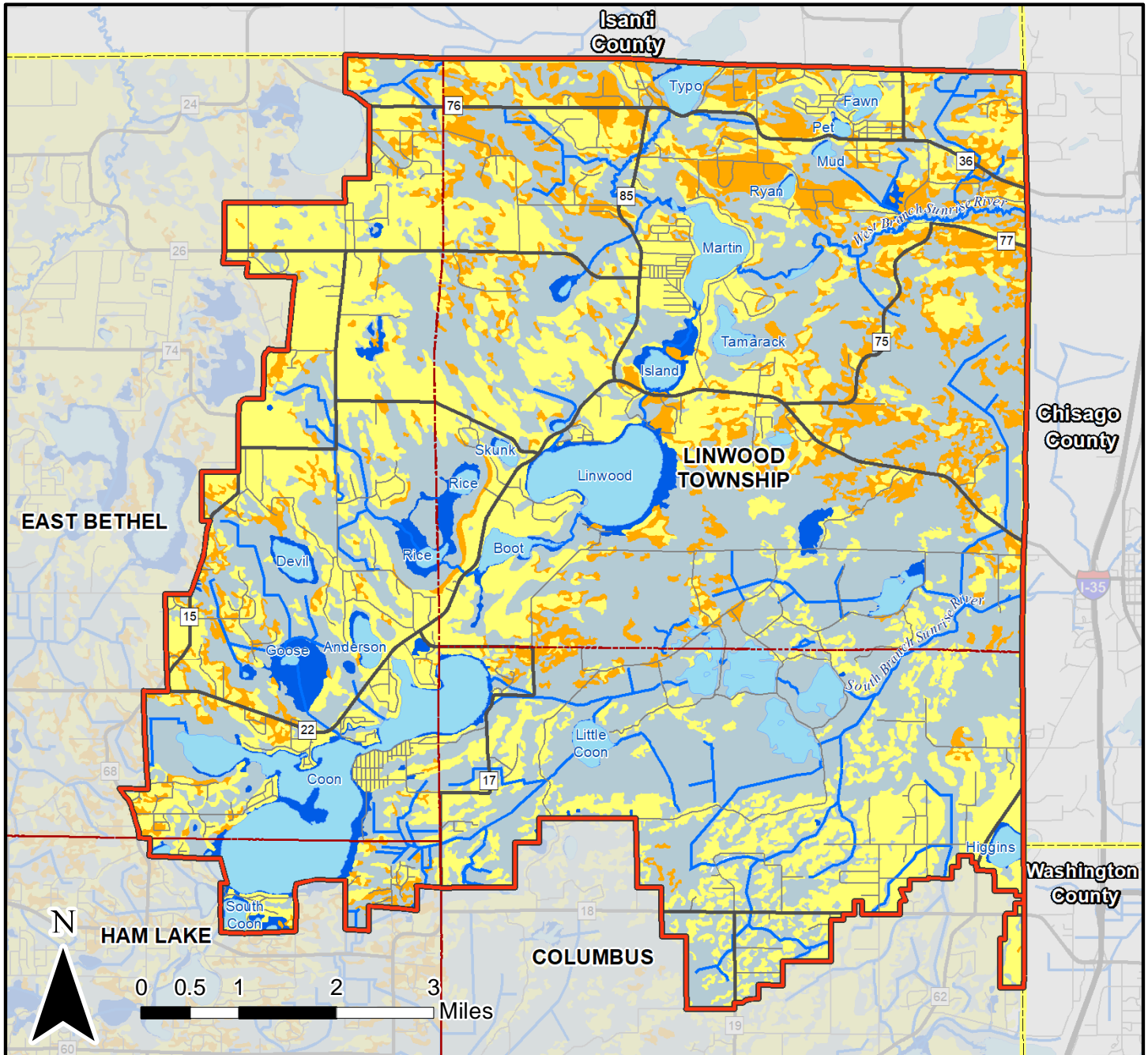
Map 3

Sources:
 Anoka County Soil Survey, 1977
 USGS National Hydrography Dataset, 2018
 MnDNR 24k Lakes, 2003

This is a reference map that depicts information compiled from several sources and its completeness or total accuracy cannot be guaranteed. If there are any questions, please contact the Anoka Conservation District at (763) 434-2030.

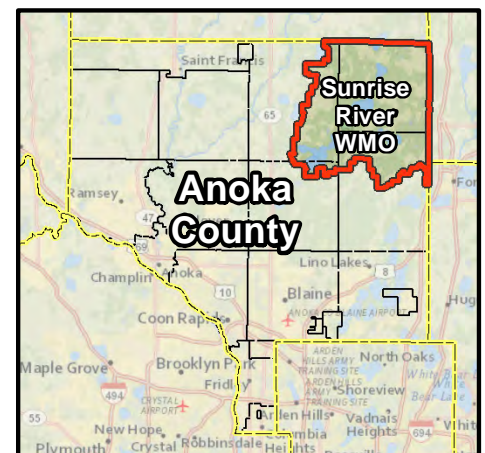


Map 4: Hydrologic Soil Group

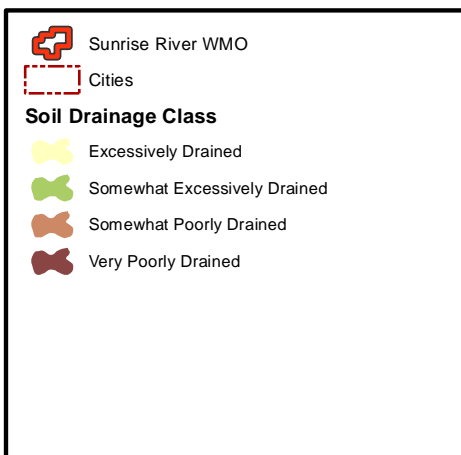
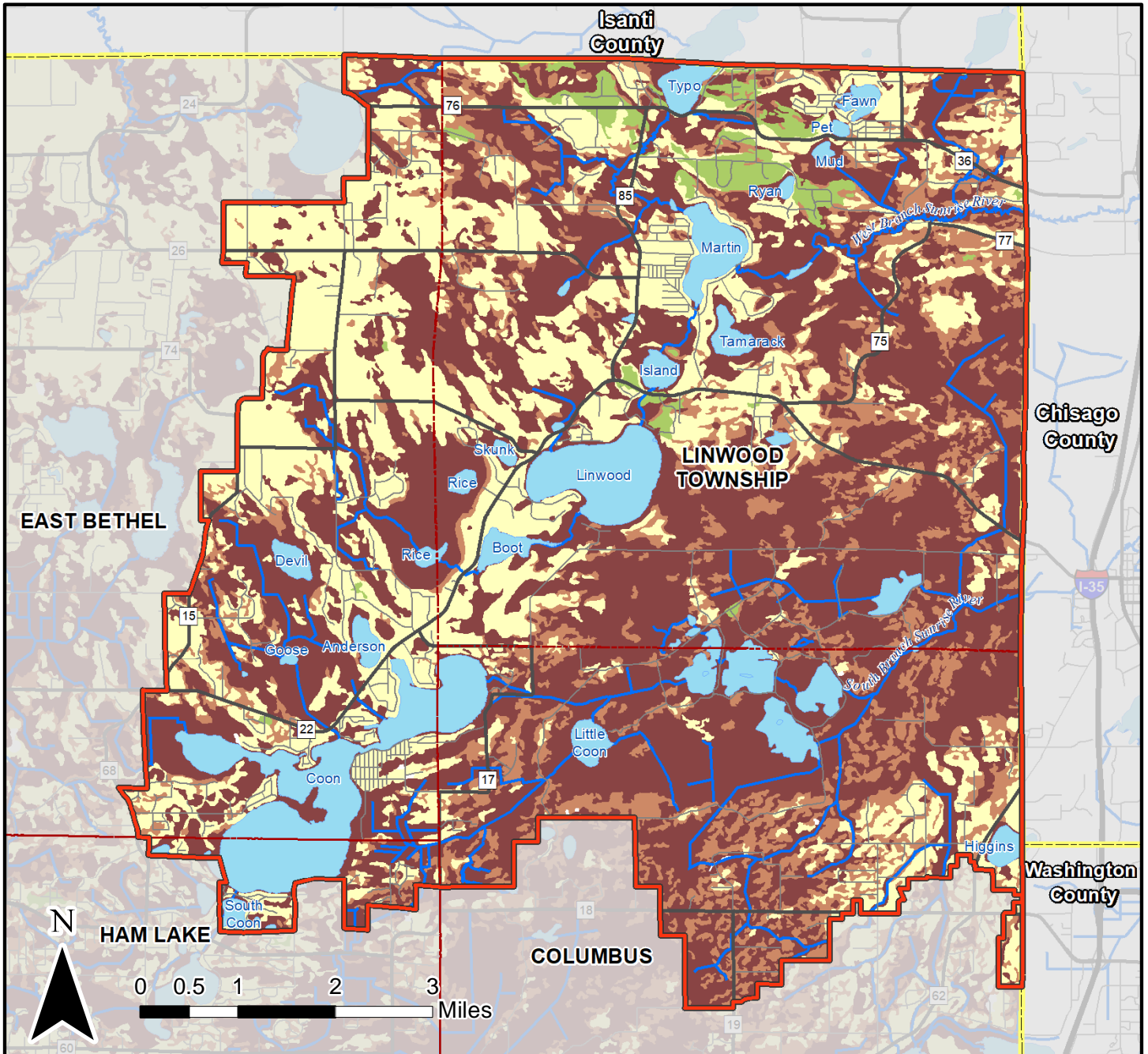


Map 4
Sources:
 Anoka County Soil Survey, 1977
 USGS National Hydrography Dataset, 2018
 MnDNR 24k Lakes, 2003

This is a reference map that depicts information compiled from several sources and its completeness or total accuracy cannot be guaranteed. If there are any questions, please contact the Anoka Conservation District at (763) 434-2030.

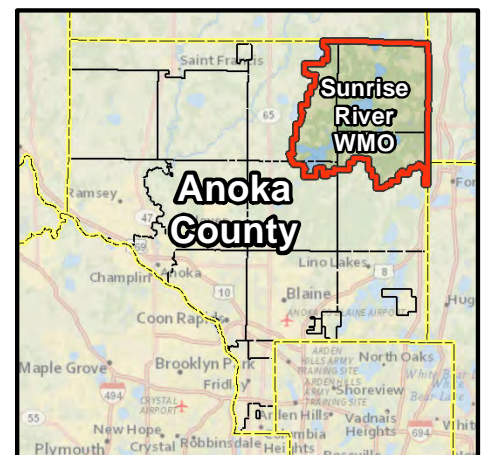


Map 5: Soil Drainage Class

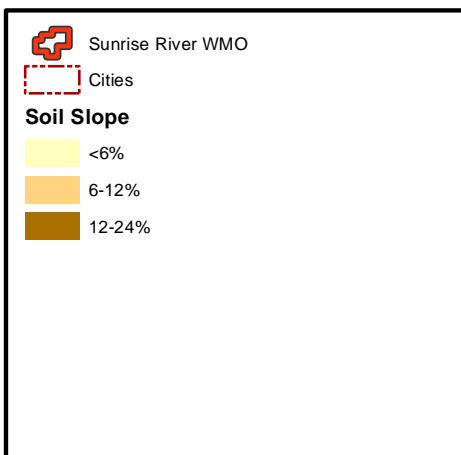
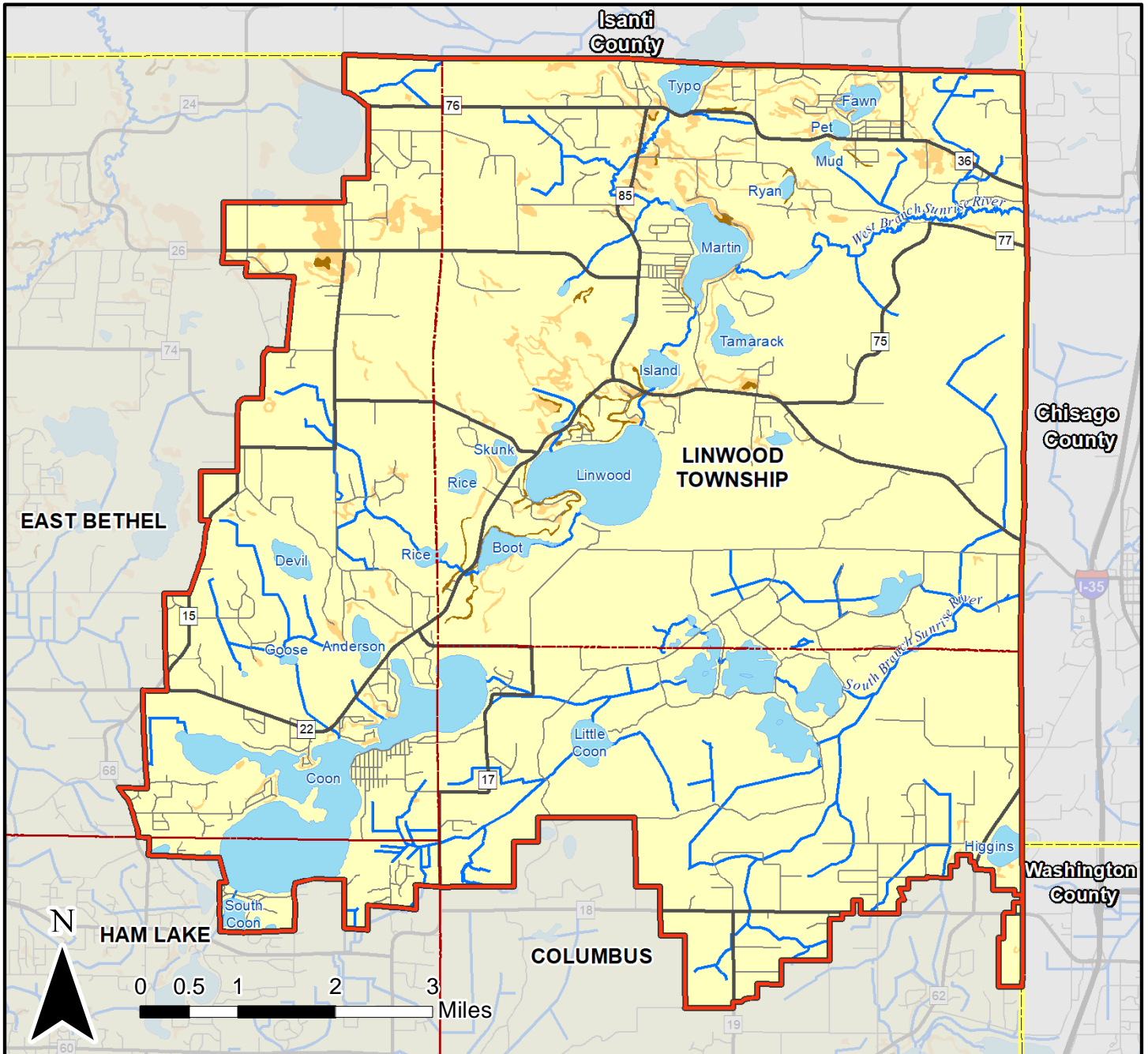


Map 5
 Sources:
 Anoka County Soil Survey, 1977
 USGS National Hydrography Dataset, 2018
 MnDNR 24k Lakes, 2003

This is a reference map that depicts information compiled from several sources and its completeness or total accuracy cannot be guaranteed. If there are any questions, please contact the Anoka Conservation District at (763) 434-2030.



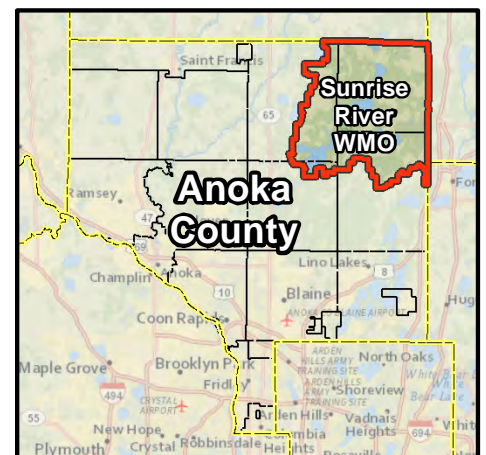
Map 6: Soil Slopes



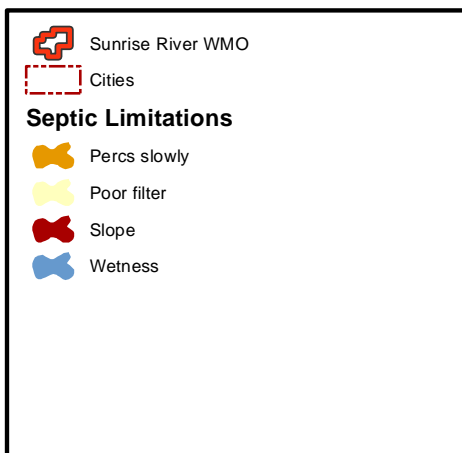
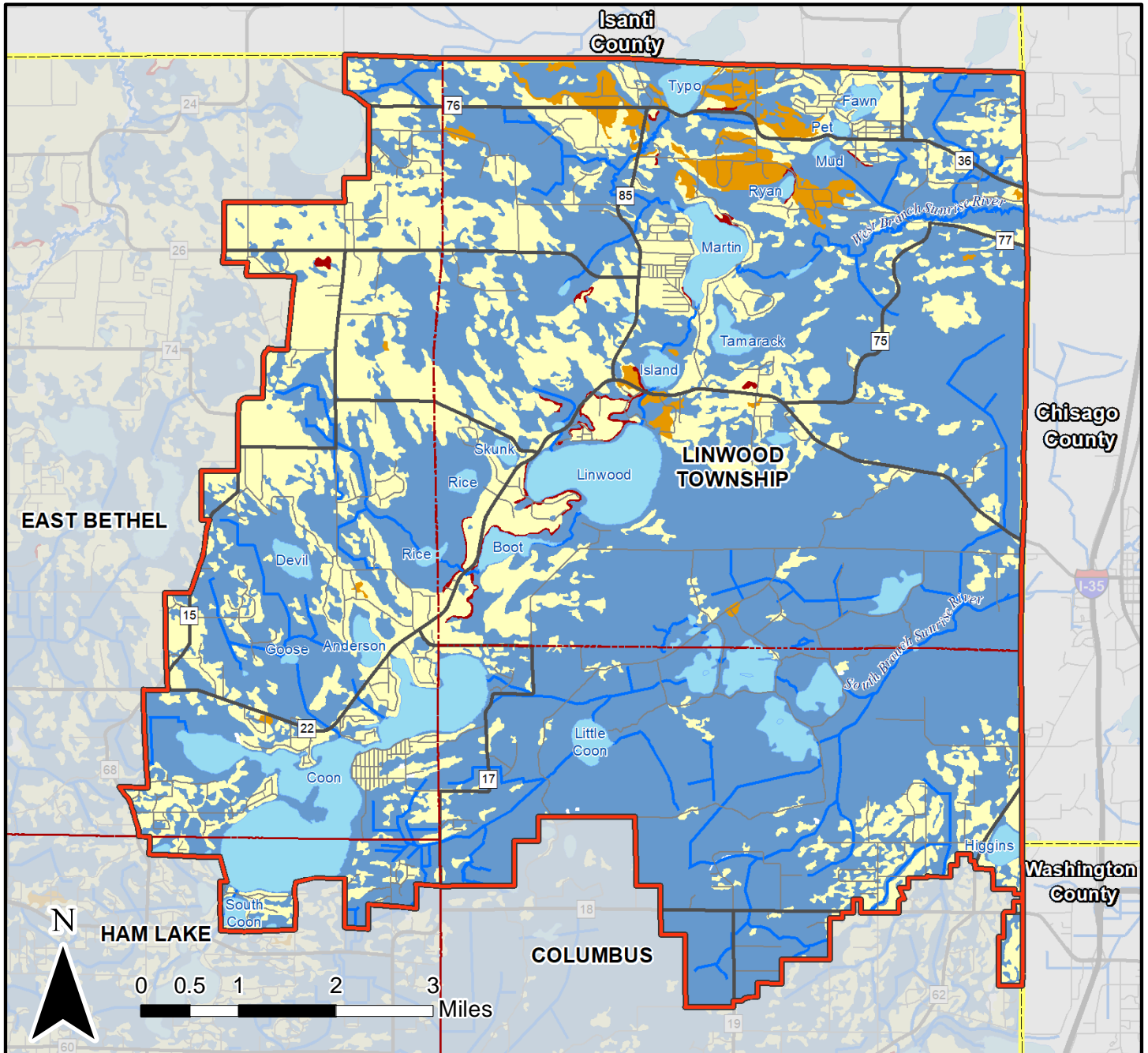
Map 6

Sources:
Anoka County Soil Survey, 1977
USGS National Hydrography Dataset, 2018
MnDNR 24k Lakes, 2003

This is a reference map that depicts information compiled from several sources and its completeness or total accuracy cannot be guaranteed. If there are any questions, please contact the Anoka Conservation District at (763) 434-2030.

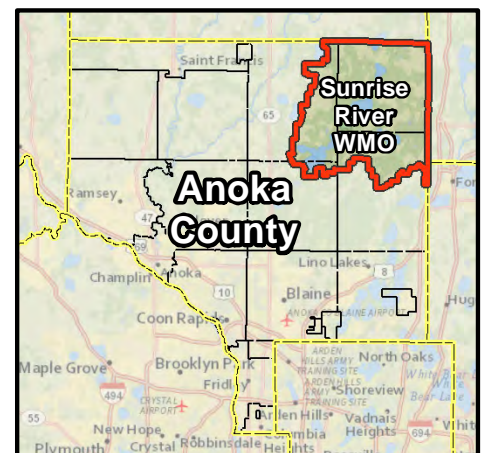


Map 7: Septic Drain Field Limitations

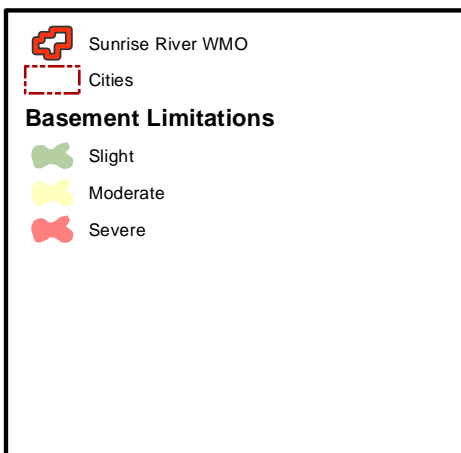
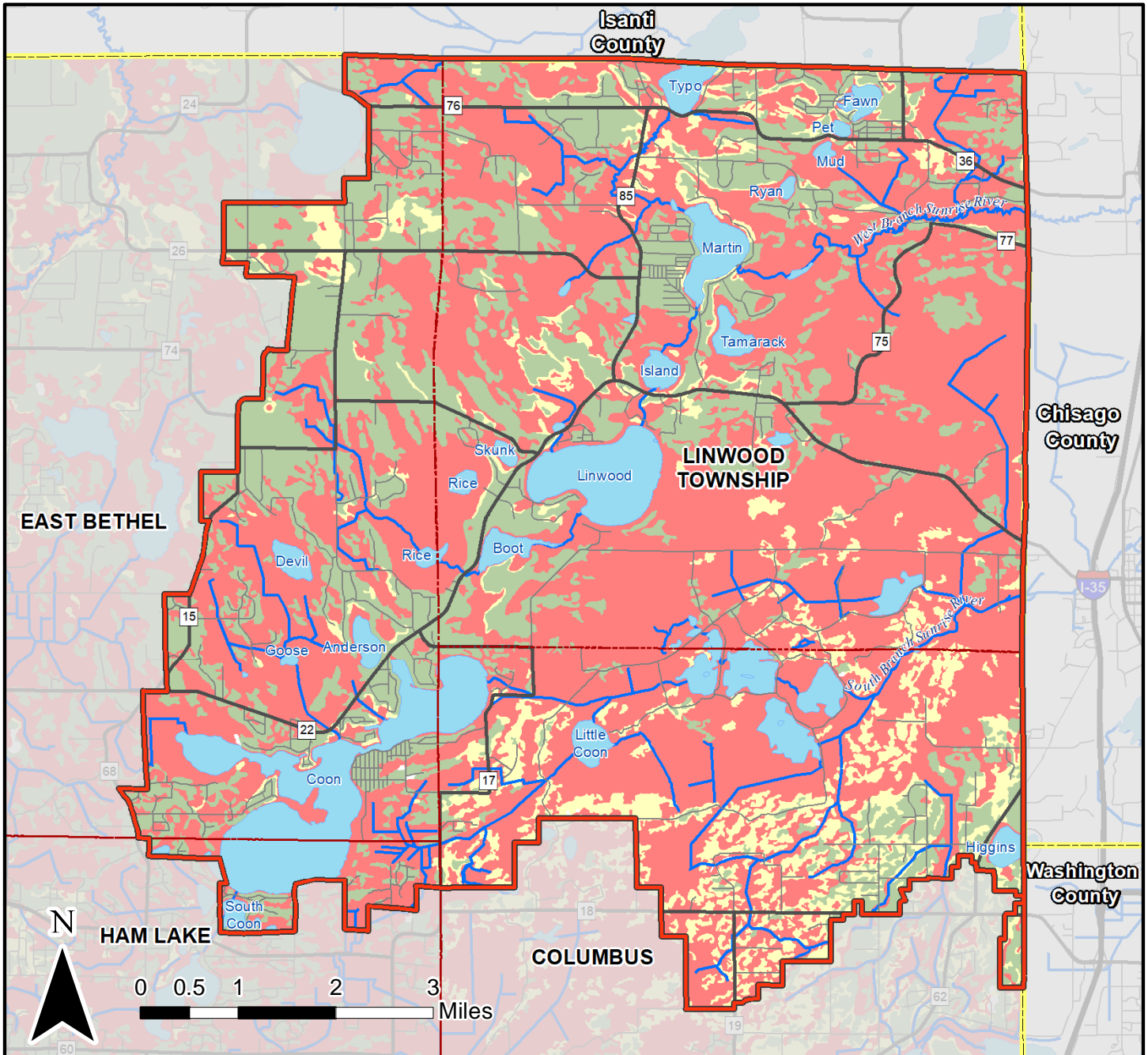


Map 7
Sources:
 Anoka County Soil Survey, 1977
 USGS National Hydrography Dataset, 2018
 MnDNR 24k Lakes, 2003

This is a reference map that depicts information compiled from several sources and its completeness or total accuracy cannot be guaranteed. If there are any questions, please contact the Anoka Conservation District at (763) 434-2030.

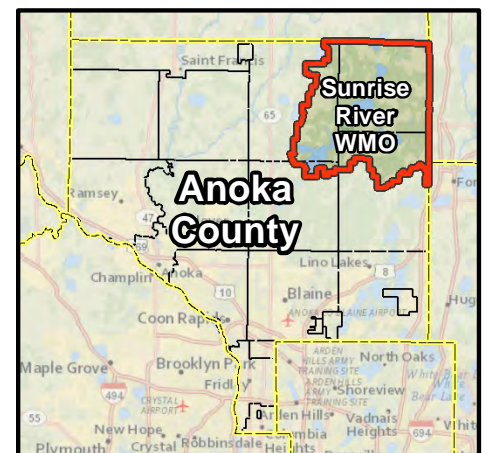


Map 8: Basement Limitations

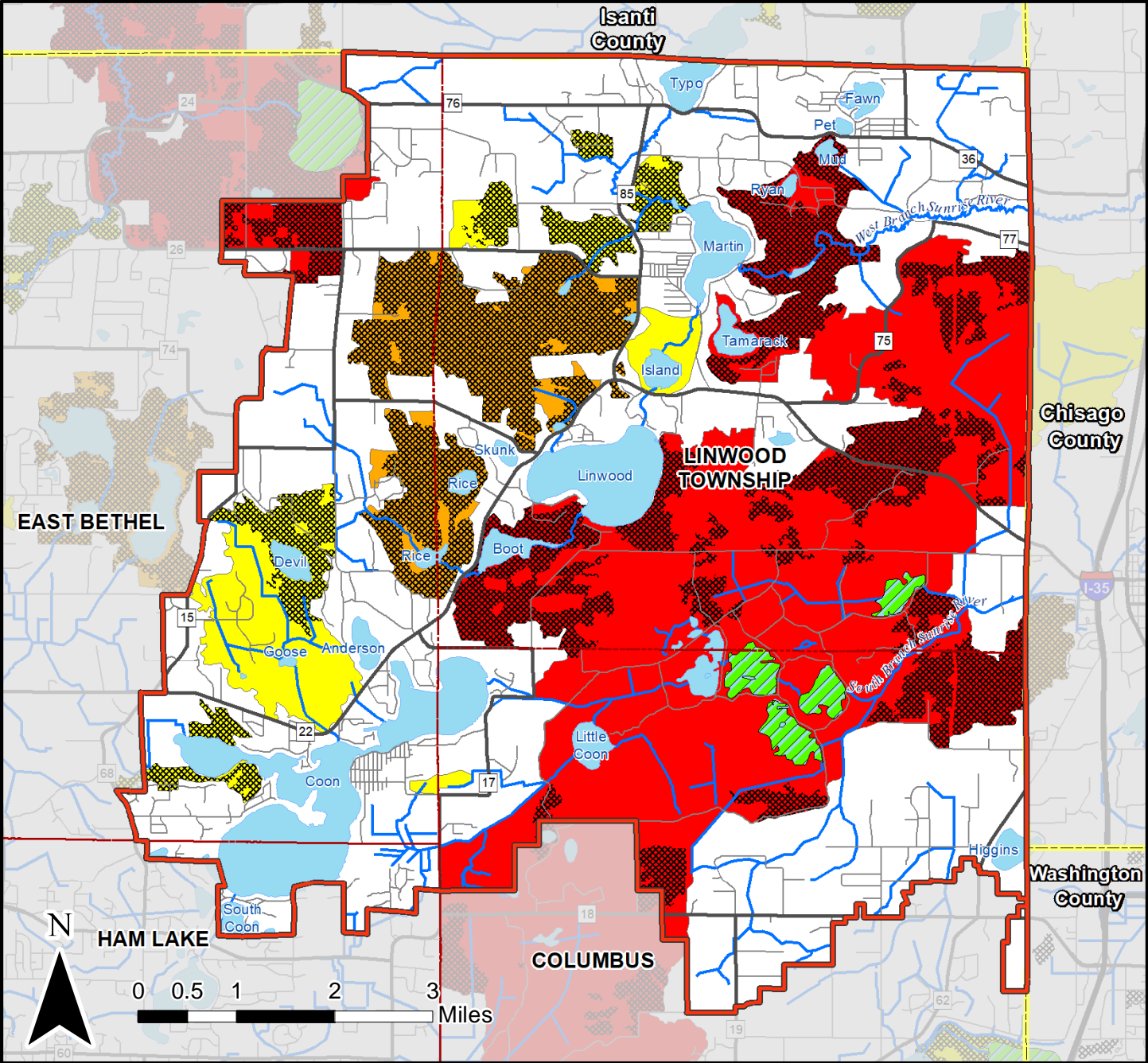






Map 8
 Sources:
 Anoka County Soil Survey, 1977
 USGS National Hydrography Dataset, 2018
 MnDNR 24k Lakes, 2003

This is a reference map that depicts information compiled from several sources and its completeness or total accuracy cannot be guaranteed. If there are any questions, please contact the Anoka Conservation District at (763) 434-2030.



Map 9: Significant Natural Areas



-  Sunrise River WMO
 Lakes
 DNR Lakes of Biological Significance
 DNR Native Plant Communities

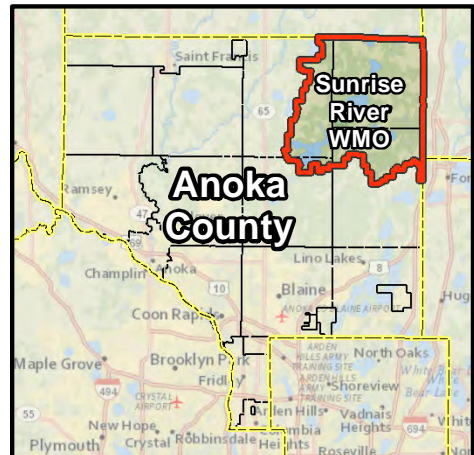
MCBS Sites of Biodiversity Significance

-  Outstanding
-  High
-  Moderate

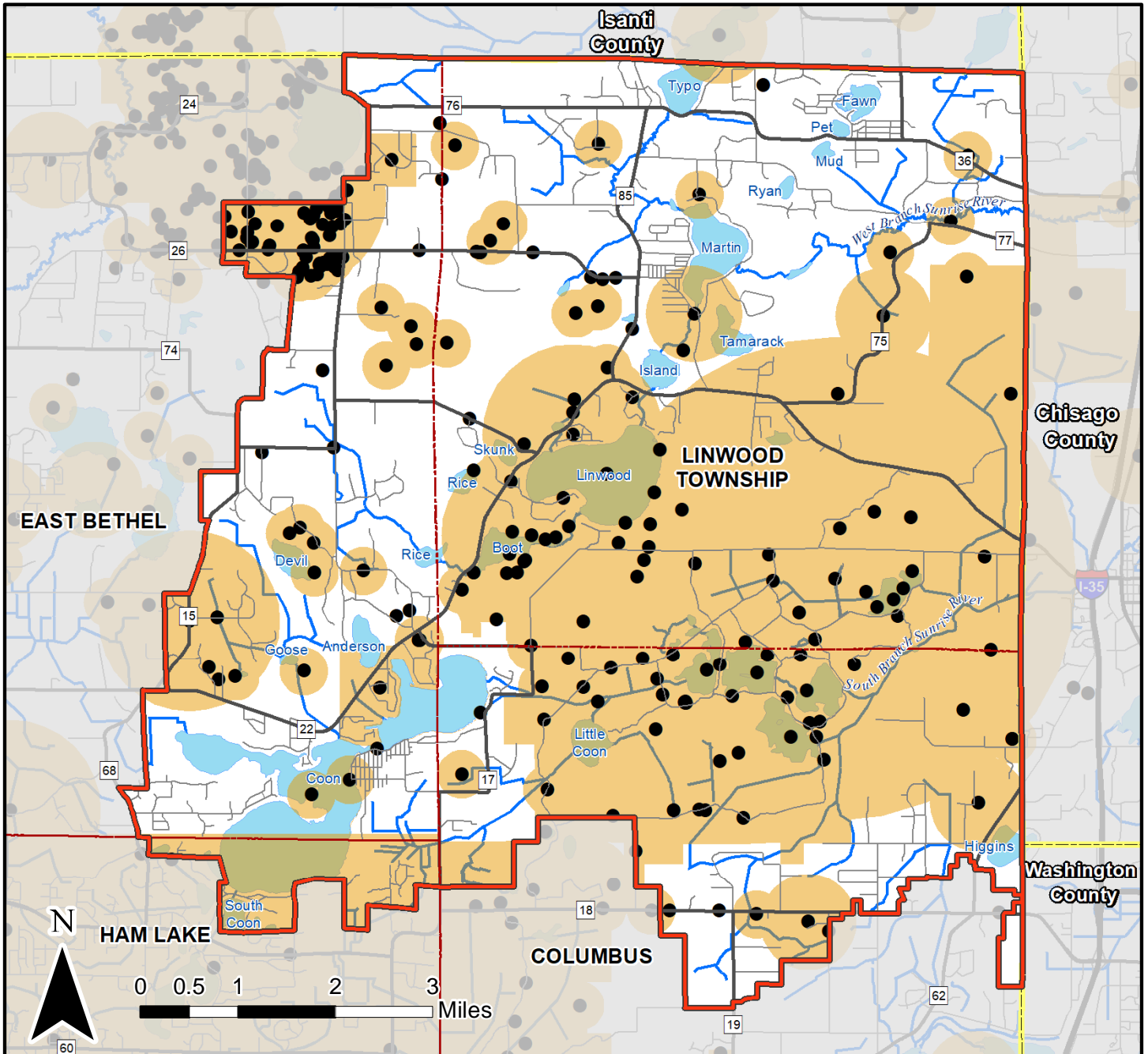
Map 9




Sources:
MnDNR Native Plant Communities, 2014
MnDNR MBS Sites of Biodiversity Significance, 2018
MnDNR Hydrography - Lakes of Biological Significance, 2015
USGS National Hydrography Dataset, 2018
MnDNR 24k Lakes, 2003

This is a reference map that depicts information compiled from several sources and its completeness or total accuracy cannot be guaranteed. If there are any questions, please contact the Anoka Conservation District at (763) 434-2030.



Map 10: Rare Species

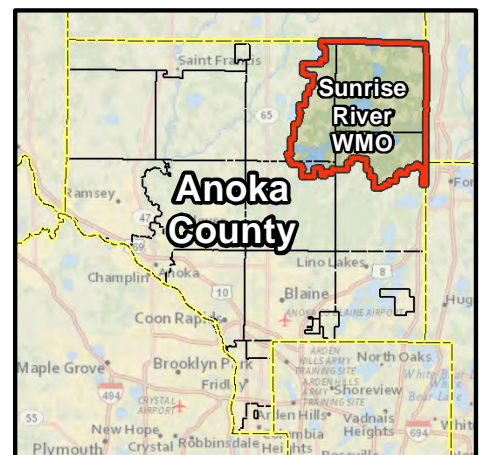


-  Sunrise River WMO
-  Rare Species Center Point
-  Rare Species Polygon

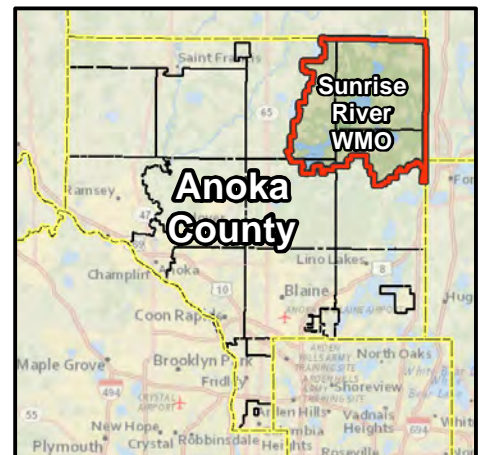
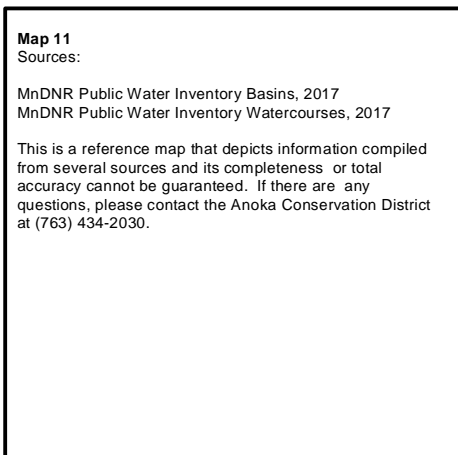
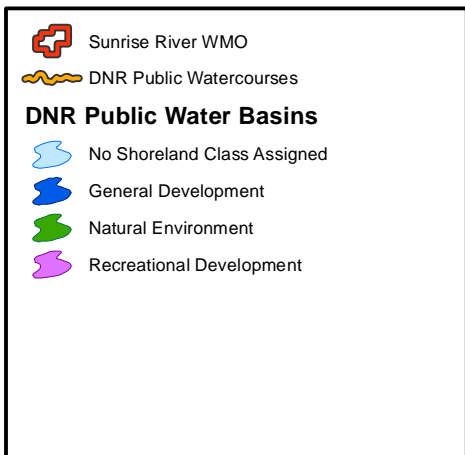
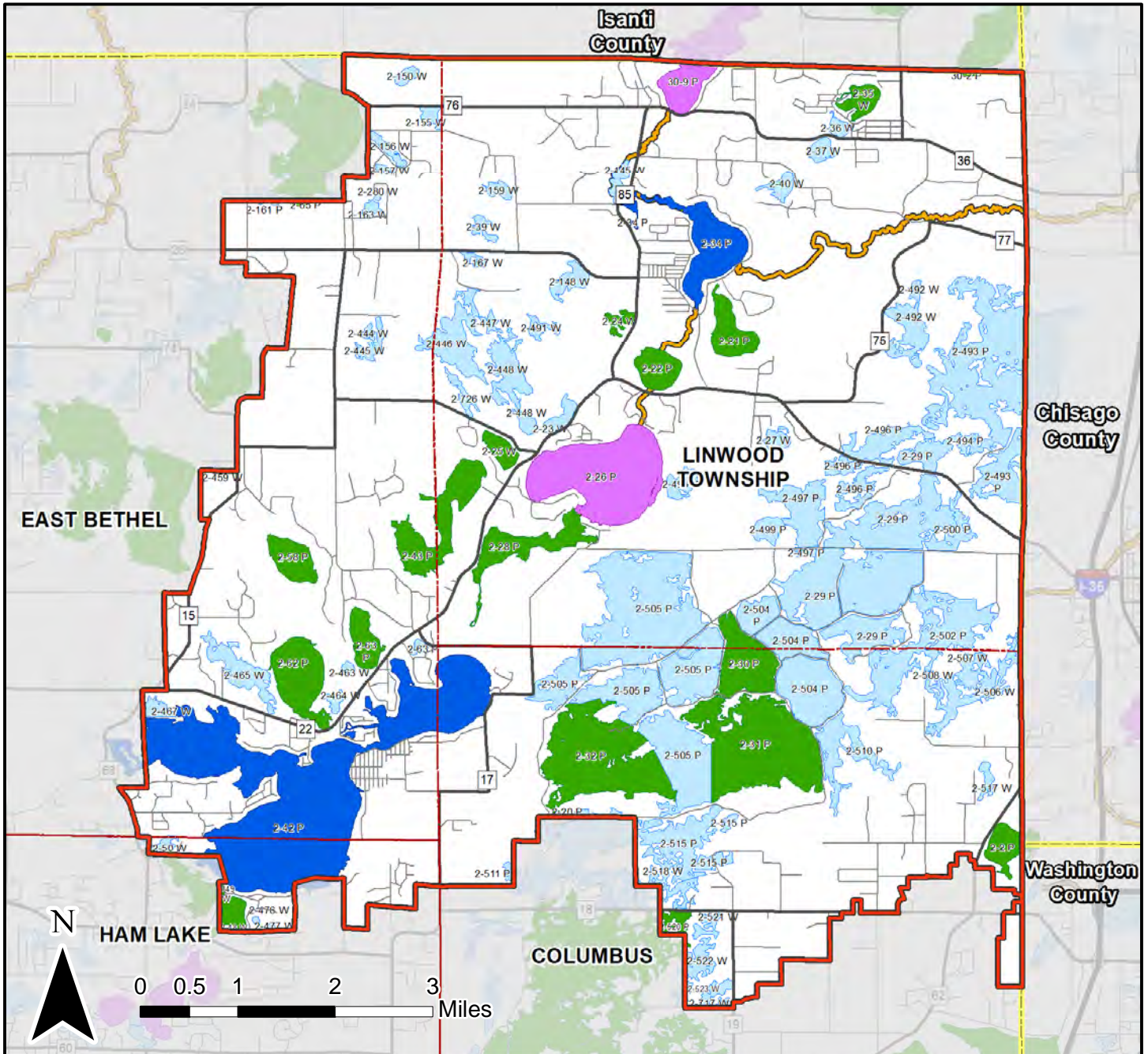
Map 10

Sources:
MnDNR Rare Natural Features Points, 2017
MnDNR Rare Natural Features Polygons, 2017
USGS National Hydrography Dataset, 2018
MnDNR 24k Lakes, 2003

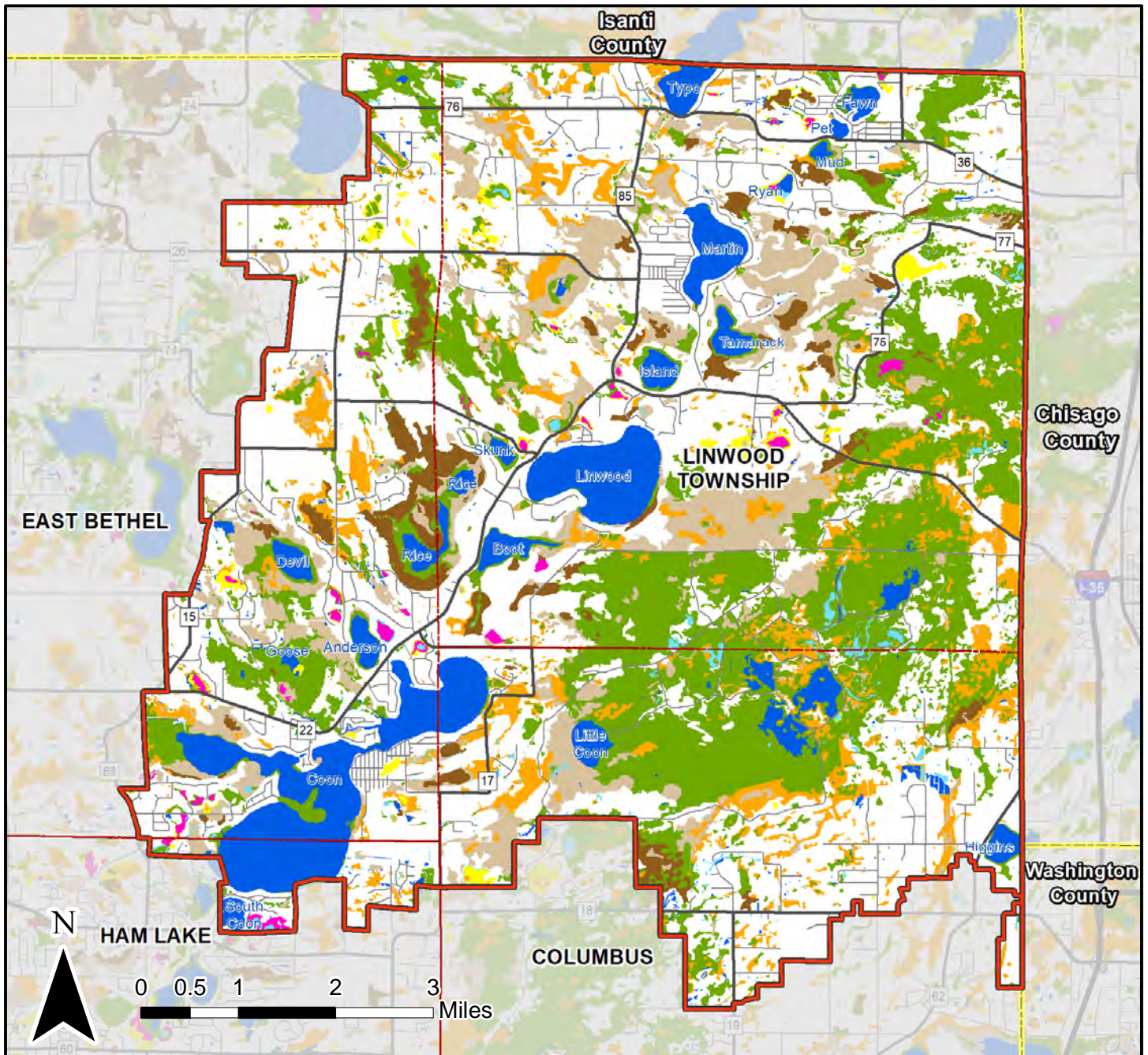
This is a reference map that depicts information compiled from several sources and its completeness or total accuracy cannot be guaranteed. If there are any questions, please contact the Anoka Conservation District at (763) 434-2030.



Map 11: DNR Public Waters



Map 12: National Wetland Inventory



Sunrise River WMO

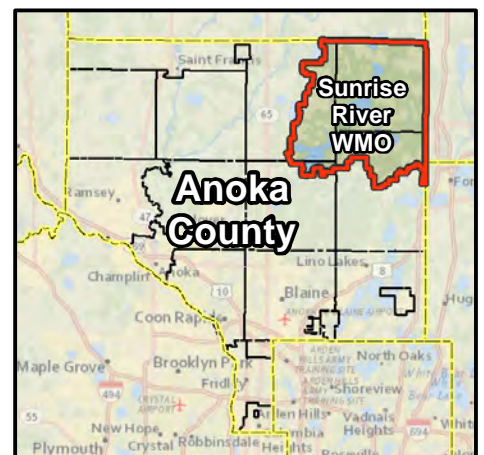
National Wetland Inventory

-  Type 1 - Seasonally Flooded
-  Type 2 - Wet Meadow
-  Type 3 - Shallow Marsh
-  Type 4 - Deep Marsh
-  Type 5 - Open Water
-  Type 6 - Shrub Swamp
-  Type 7 - Wooded Swamp
-  Type 8 - Bog

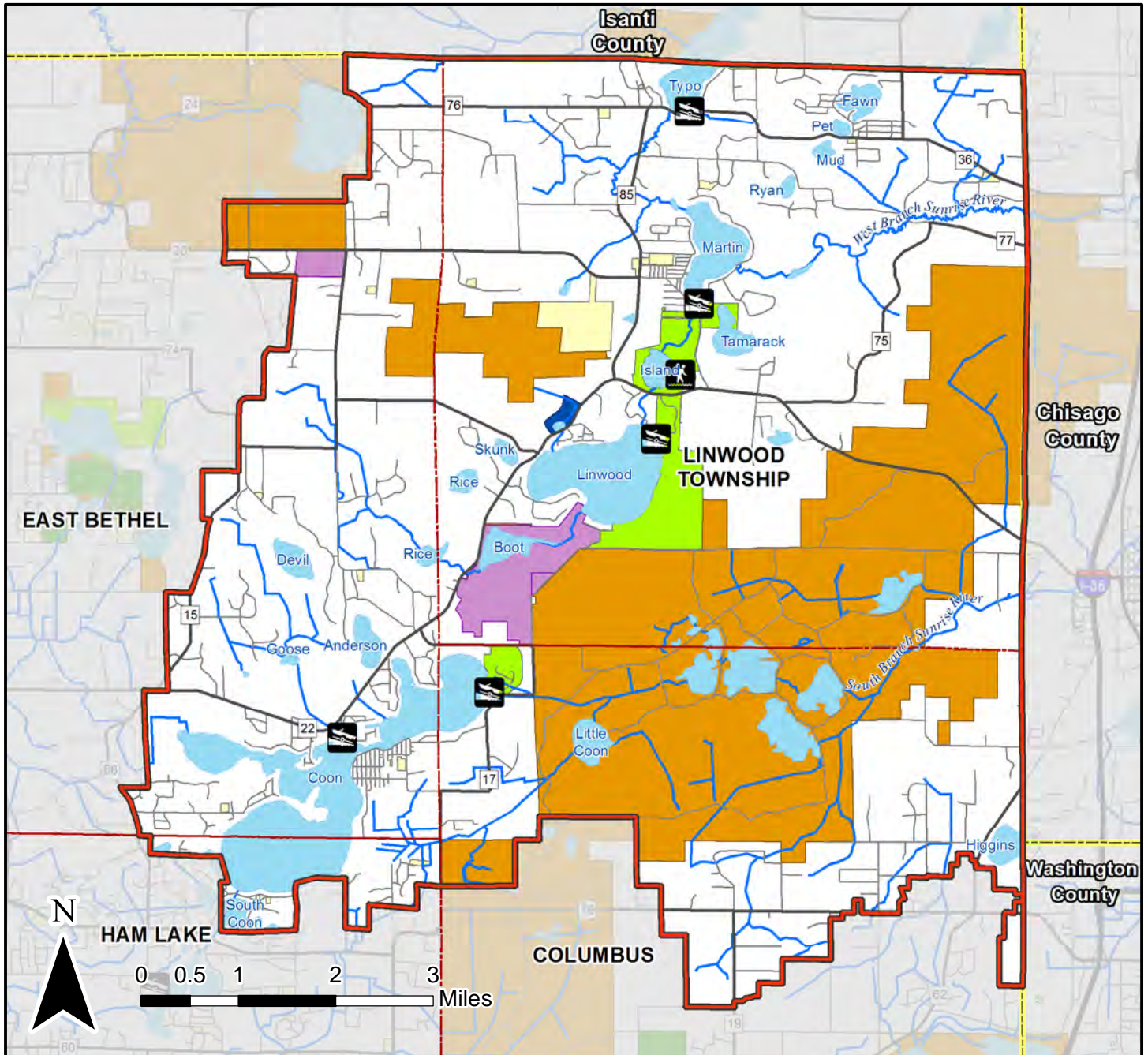
Map 12 Sources:

Minnesota National Wetland Inventory Update, 2017

This is a reference map that depicts information compiled from several sources and its completeness or total accuracy cannot be guaranteed. If there are any questions, please contact the Anoka Conservation District at (763) 434-2030.



Map 13: Public Spaces and Water Access



Sunrise River WMO



Carry-In



Trailer Launch

Ownership



County



Municipal



DNR Aquatic Management Area -



DNR Scientific and Natural Area - SNA



DNR Other Forest Land



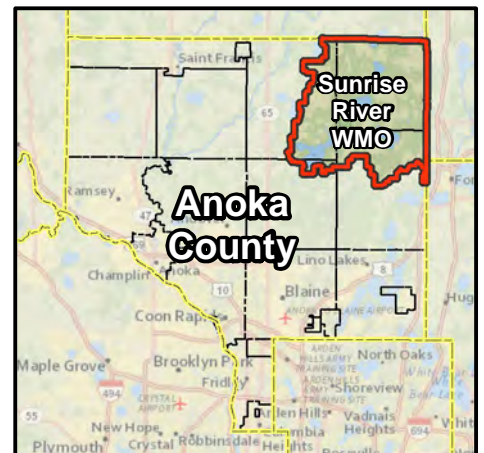
DNR Wildlife Management Area - WMA

Map 13

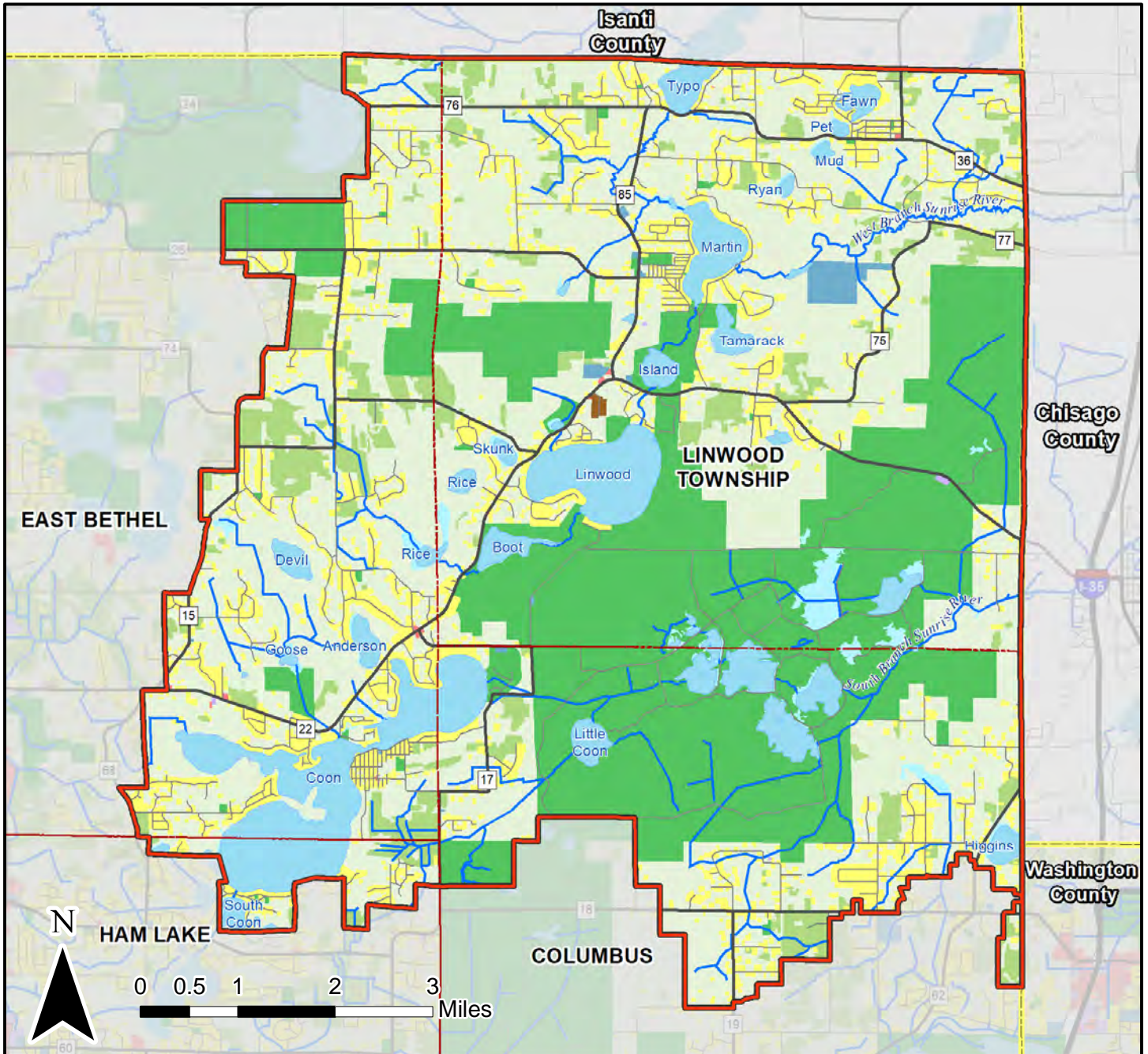
Sources:

MnDNR Management Units, 2013
Metro Collaborative Parks, 2018
USGS National Hydrography Dataset, 2018
MnDNR 24k Lakes, 2003

This is a reference map that depicts information compiled from several sources and its completeness or total accuracy cannot be guaranteed. If there are any questions, please contact the Anoka Conservation District at (763) 434-2030.



Map 14: 2016 Land Use



Sunrise River WMO

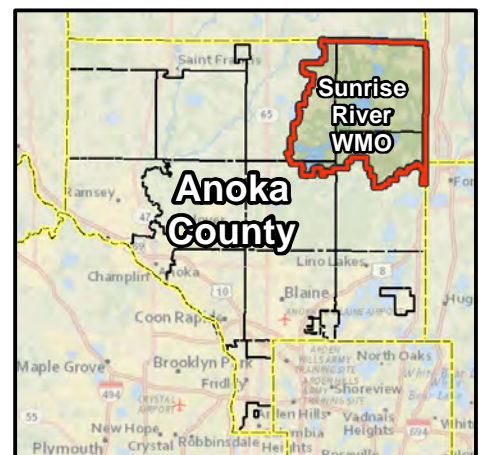
2016 Land Use

- Residential
- Manufactured Housing Park
- Retail and Commercial
- Industrial
- Institutional
- Park, Recreational or Preserve; Golf Course
- Agricultural
- Undeveloped
- Water

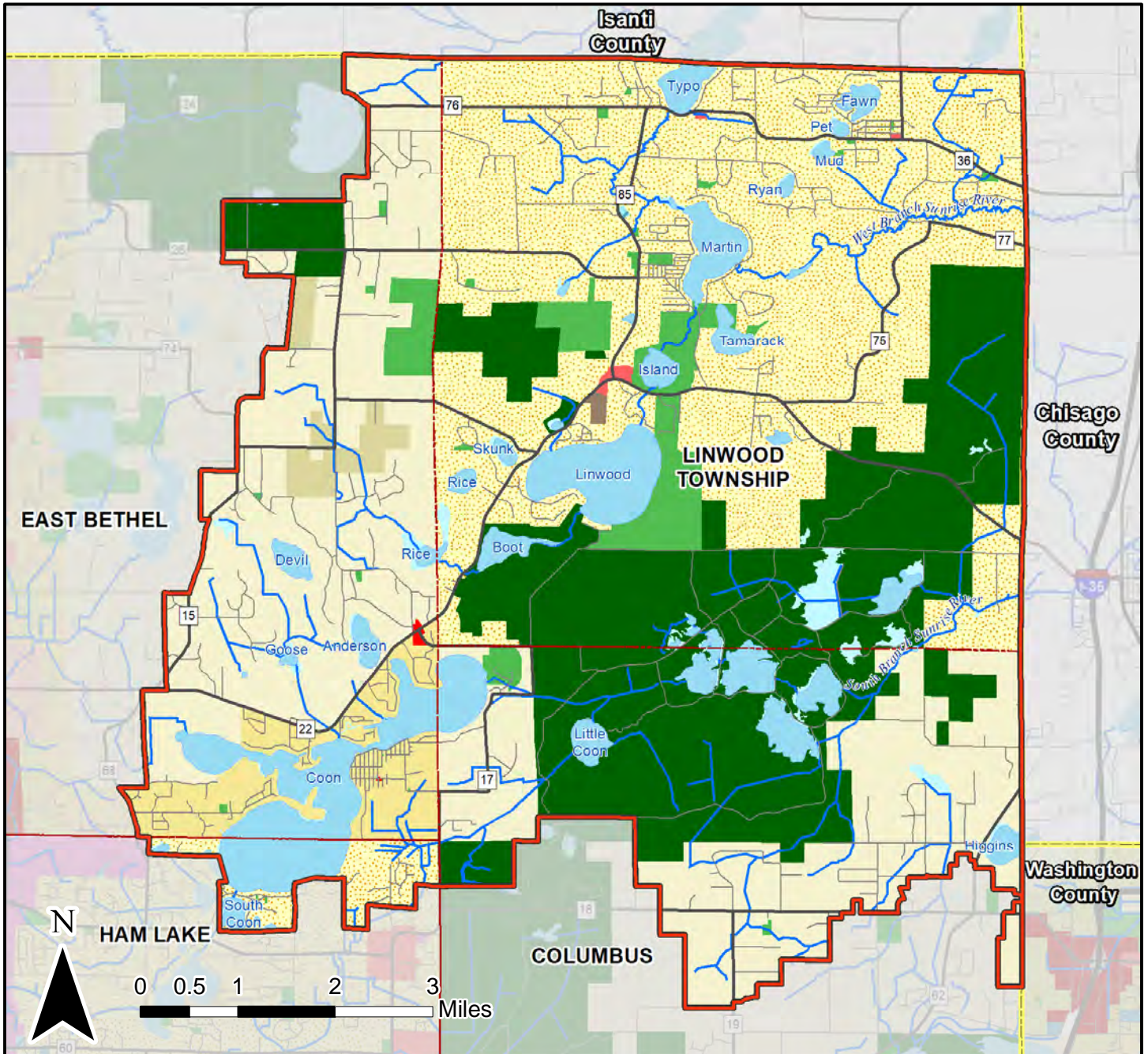
Map 14 Sources:

MetCouncil 2016 Generalized Land Use, 2017
USGS National Hydrography Dataset, 2018
MnDNR 24k Lakes, 2003

This is a reference map that depicts information compiled from several sources and its completeness or total accuracy cannot be guaranteed. If there are any questions, please contact the Anoka Conservation District at (763) 434-2030.



Map 15: Planned Land Use

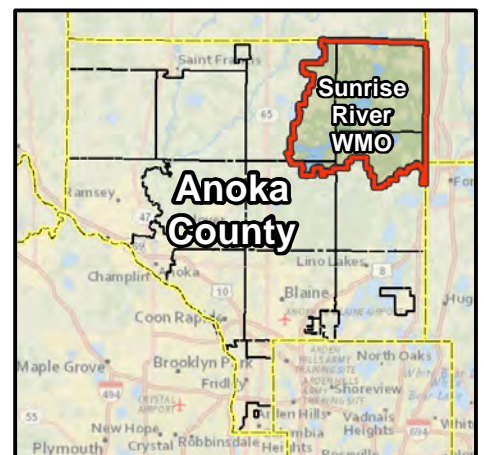


	Sunrise River WMO
Planned Land Use	
	Agricultural, Undifferentiated
	Rural Residential
	Large Lot Residential, Undifferentiated
	Manufactured Housing Park
	Single Family, Detached Residential
	Single Family, Detached and Attached Residential
	Single Family, Attached and Multifamily Residential
	Multifamily Residential
	Commercial, Retail or Undifferentiated
	Neighborhood Commercial
	Highway / Convenience Commercial
	Light Industrial
	Utility
	Institutional, Undifferentiated
	Religious
	Educational
	Governmental
	Residential or Other Use
	Industrial or Other Use
	Commercial or Other Use
	Community Park and Recreation
	Open Space: Natural
	Open Space: Restrictive
	Vehicular Rights-of-Way
	Open Water

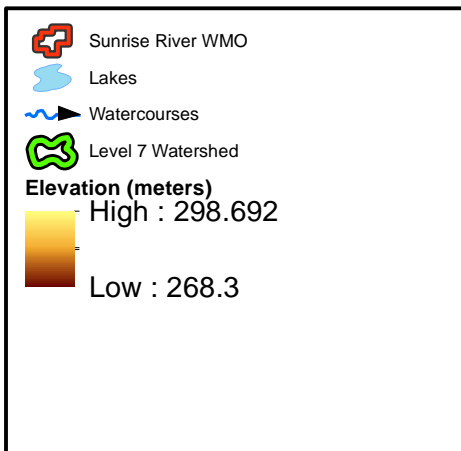
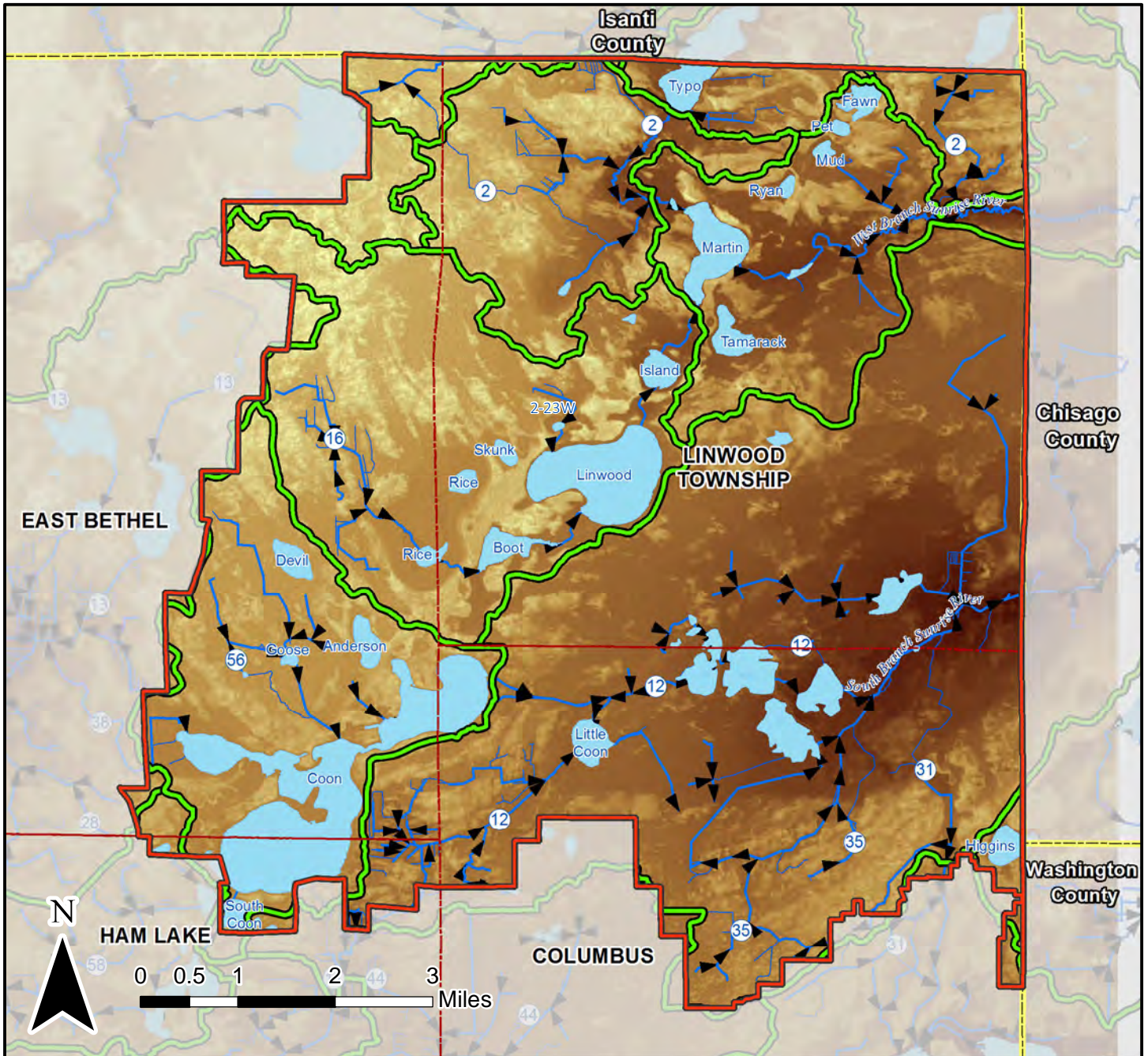
Map 15
Sources:

MetCouncil Regional Planned Land Use - Twin Cities Metropolitan Area, 2018
USGS National Hydrography Dataset, 2018
MnDNR 24k Lakes, 2003

This is a reference map that depicts information compiled from several sources and its completeness or total accuracy cannot be guaranteed. If there are any questions, please contact the Anoka Conservation District at (763) 434-2030.



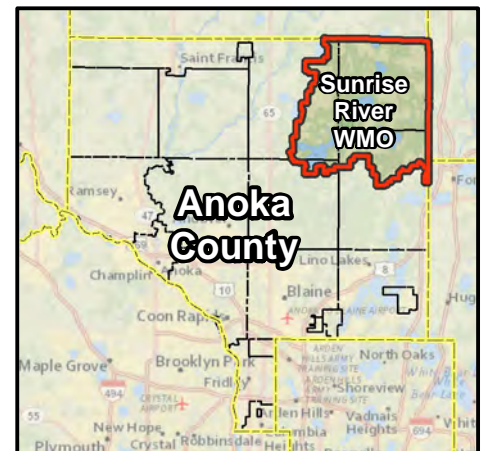
Map 16: Subwatersheds



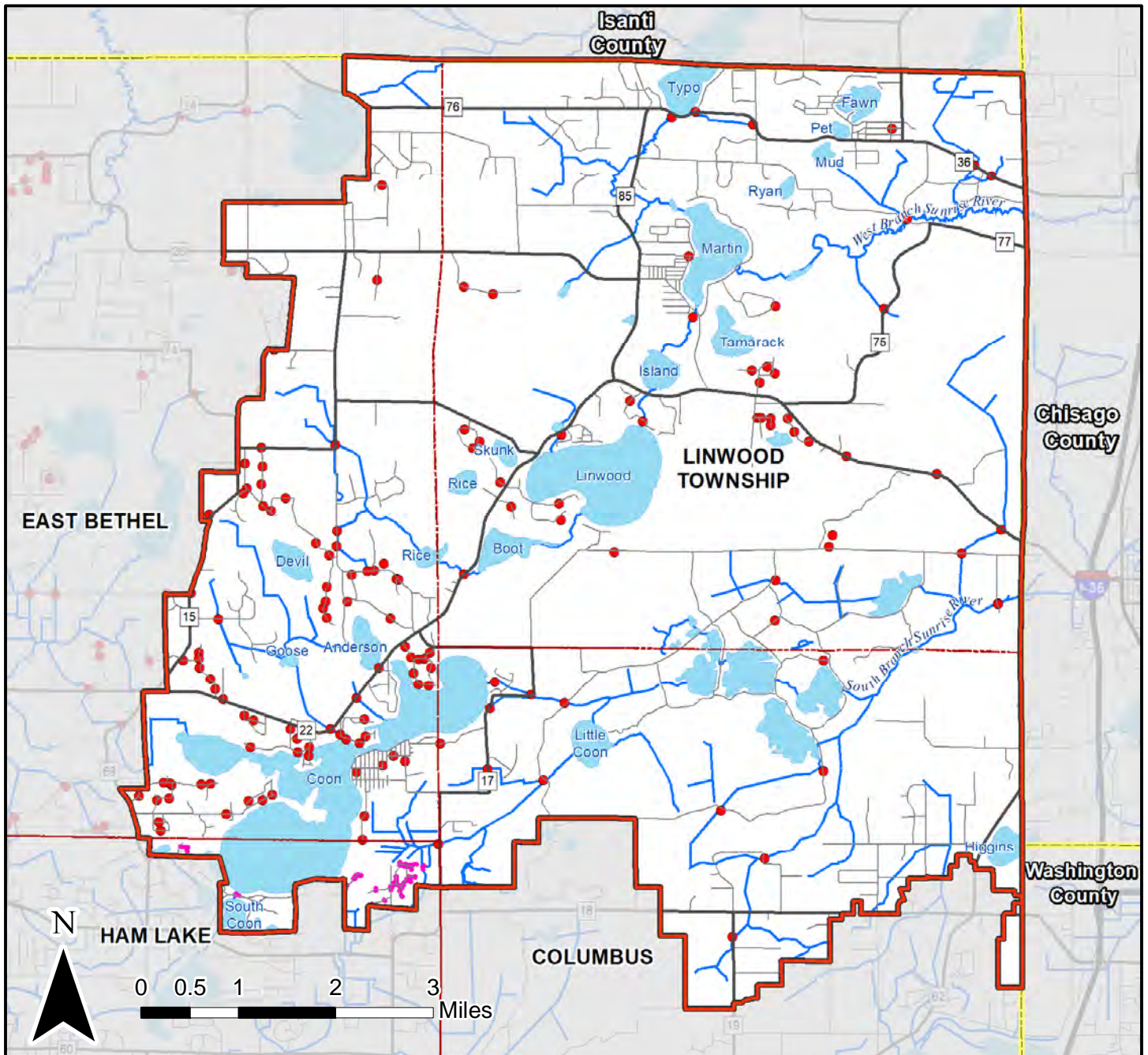
Map 13
Sources:




MnDNR Management Units, 2013
Metro Collaborative Parks, 2018
USGS National Hydrography Dataset, 2018
MnDNR 24k Lakes, 2003

This is a reference map that depicts information compiled from several sources and its completeness or total accuracy cannot be guaranteed. If there are any questions, please contact the Anoka Conservation District at (763) 434-2030.



Map 17: Water Controls and Culverts



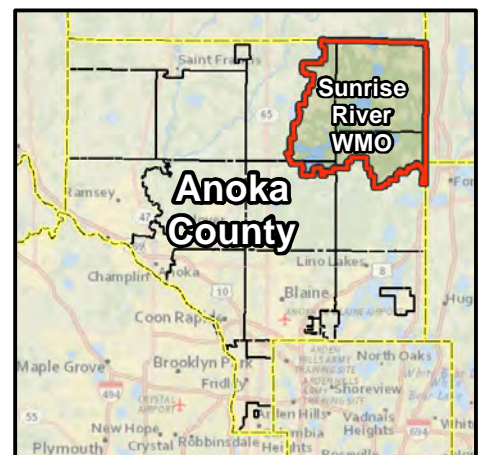
-  Sunrise River WMO
-  Culverts
-  Ham Lake Storm System

Map 17 Sources:

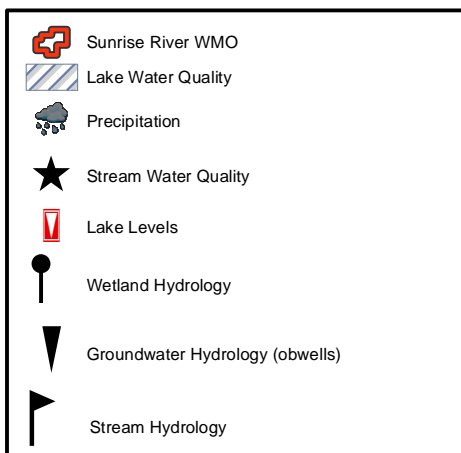
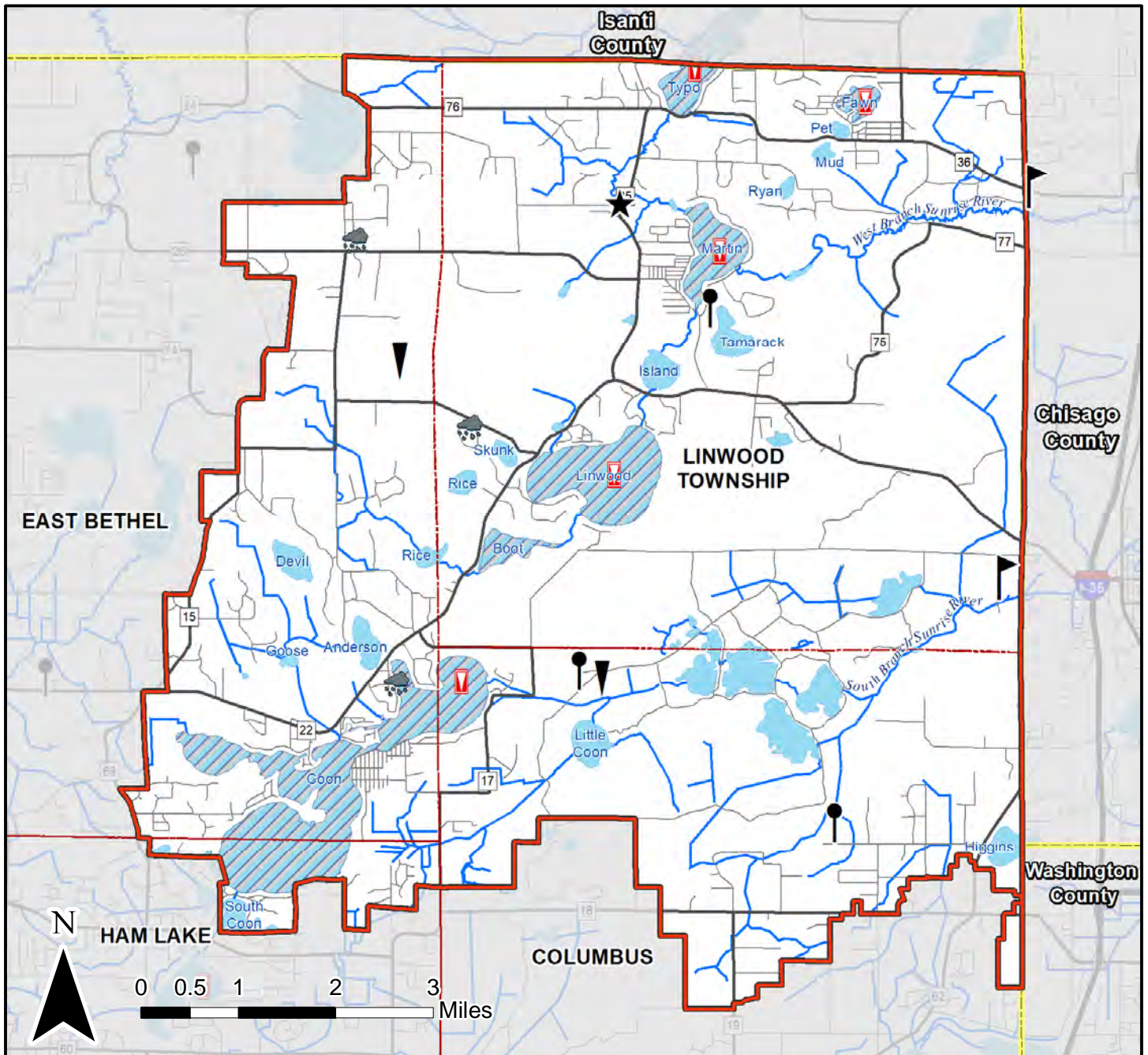
Ham Lake, 2018
 East Bethel, 2018
 Columbus, 2018
 Linwood Township, 2018
 MnDNR Carlos Avery Water Controls

USGS National Hydrography Dataset, 2018
 MnDNR 24k Lakes, 2003

This is a reference map that depicts information compiled from several sources and its completeness or total accuracy cannot be guaranteed. If there are any questions, please contact the Anoka Conservation District at (763) 434-2030.



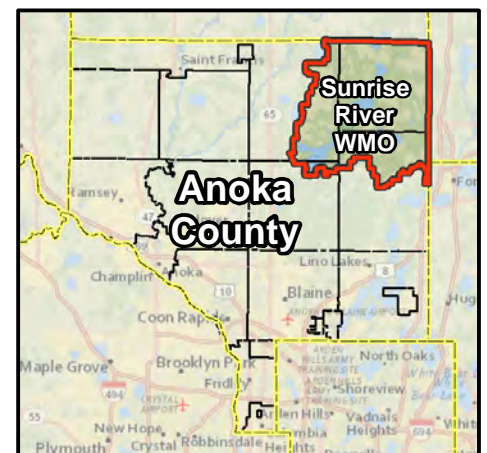
Map 18: Monitoring Sites (2015-2018)



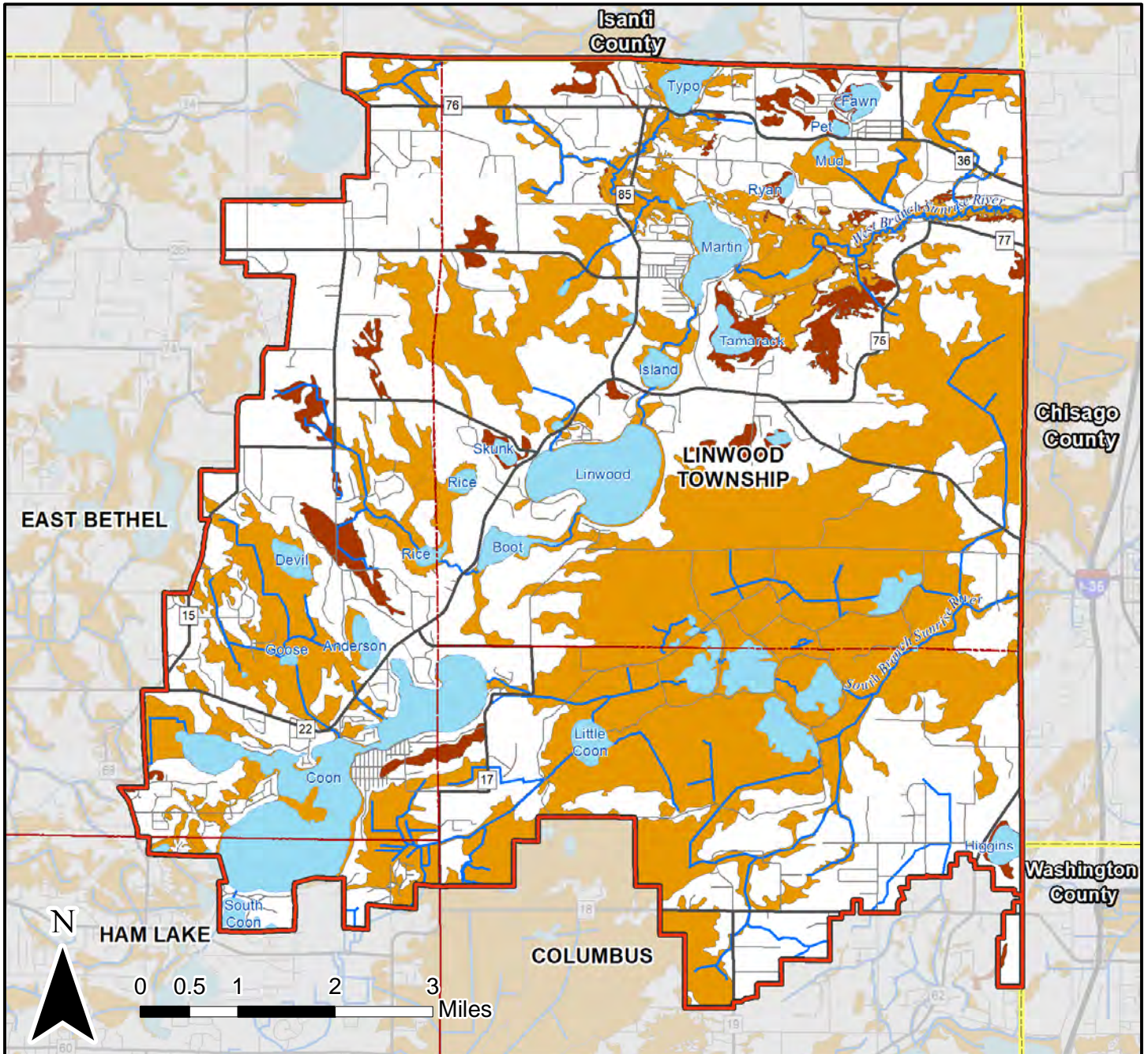
Map 18
Sources:

Anoka Conservation District Monitoring Sites 2015-2017
USGS National Hydrography Dataset, 2018
MnDNR 24k Lakes, 2003

This is a reference map that depicts information compiled from several sources and its completeness or total accuracy cannot be guaranteed. If there are any questions, please contact the Anoka Conservation District at (763) 434-2030.





Map 19: FEMA Flood Boundaries



Sunrise River WMO

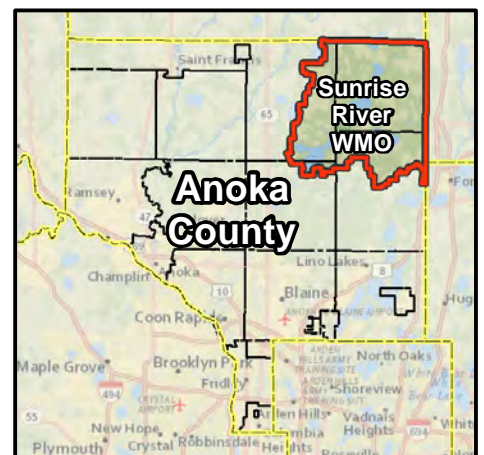
FEMA Flood Zone

-  500 Year Flood Zone
-  100 Year Flood Zone

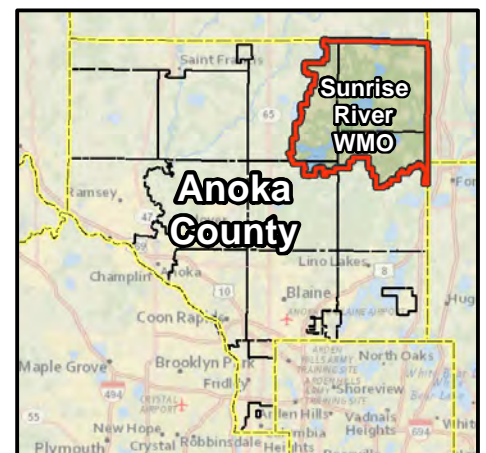
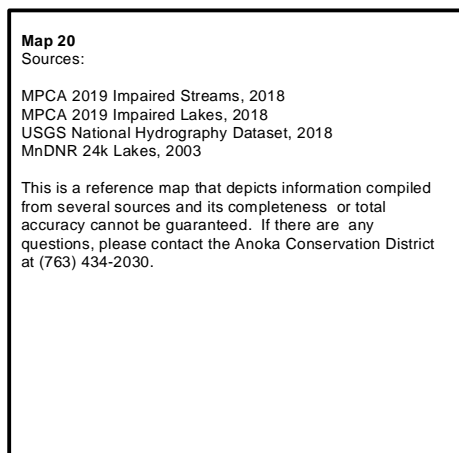
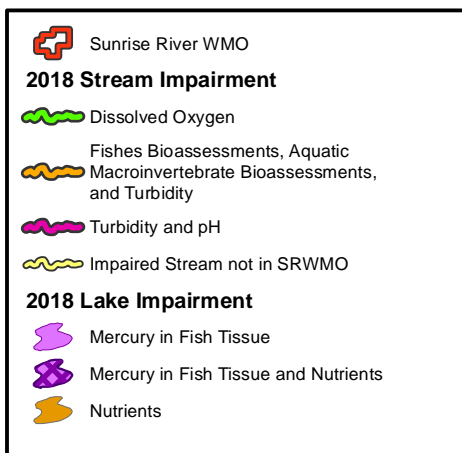
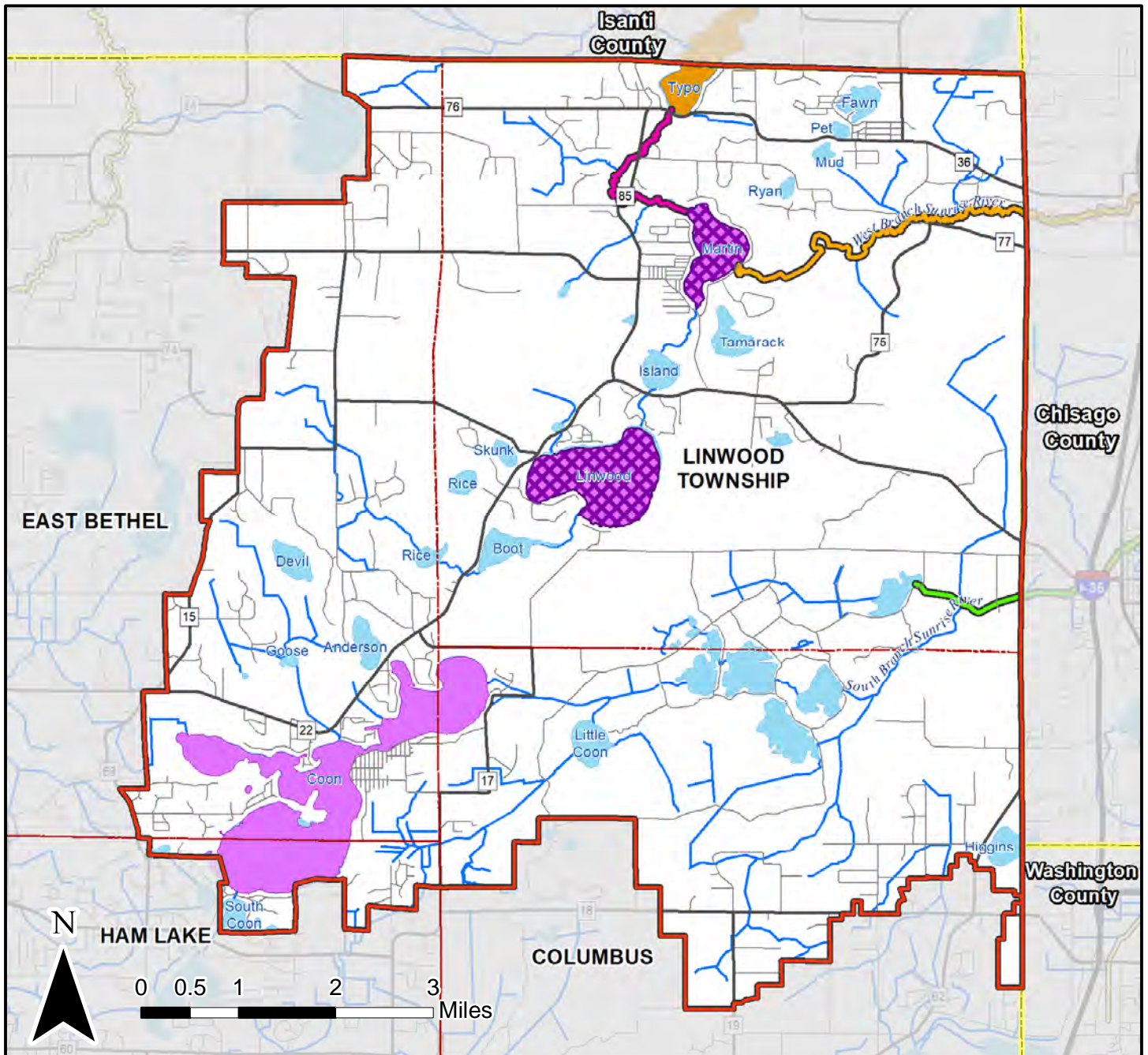
Map 19 Sources:

FEMA Digital Flood Rate Insurance Maps (DFIRM), Minnesota, 2006
USGS National Hydrography Dataset, 2018
MnDNR 24k Lakes, 2003

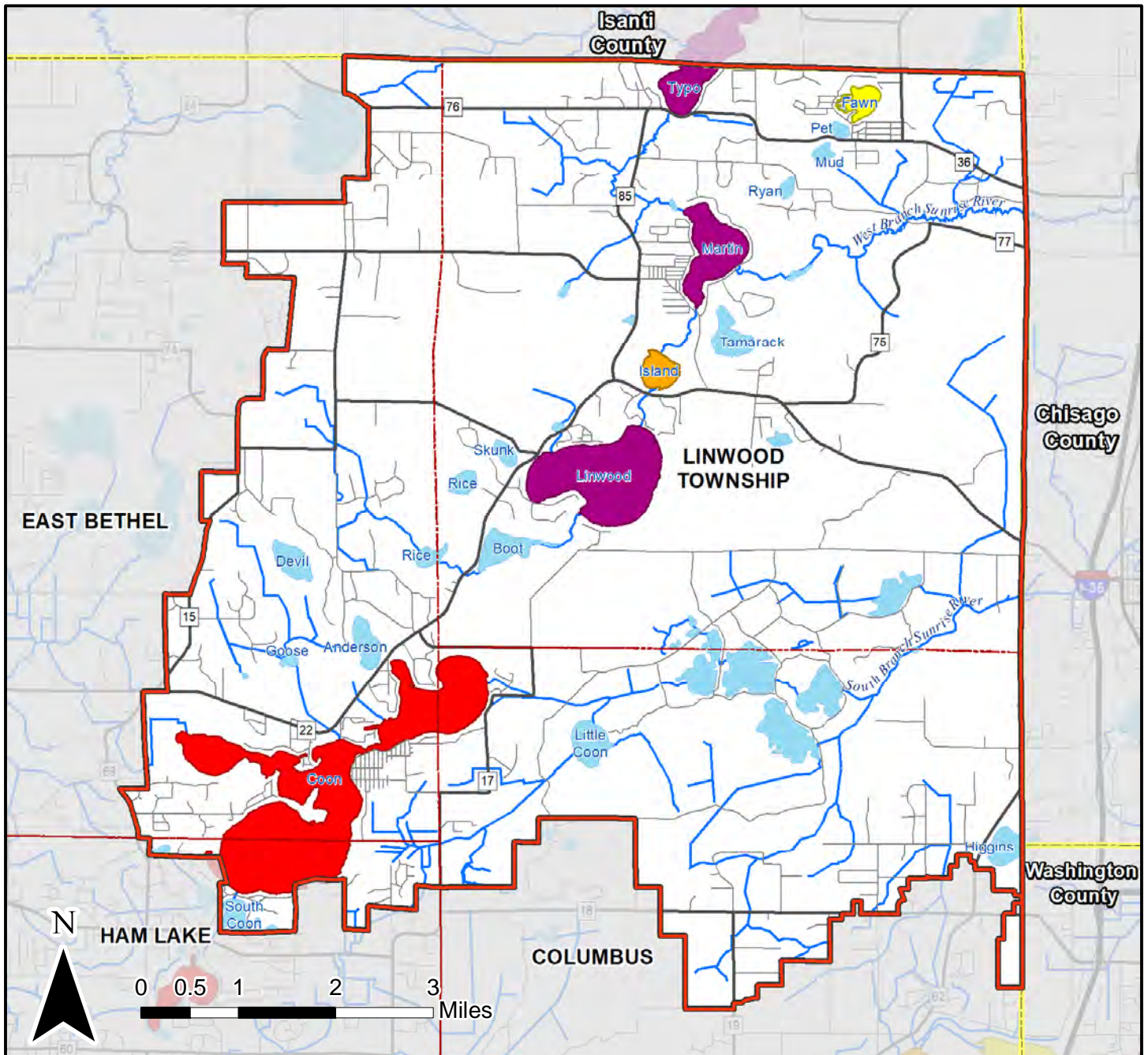
This is a reference map that depicts information compiled from several sources and its completeness or total accuracy cannot be guaranteed. If there are any questions, please contact the Anoka Conservation District at (763) 434-2030.



Map 20: Impaired Waters



Map 21: Lakes of Phosphorus Sensitivity Significance



Sunrise River WMO

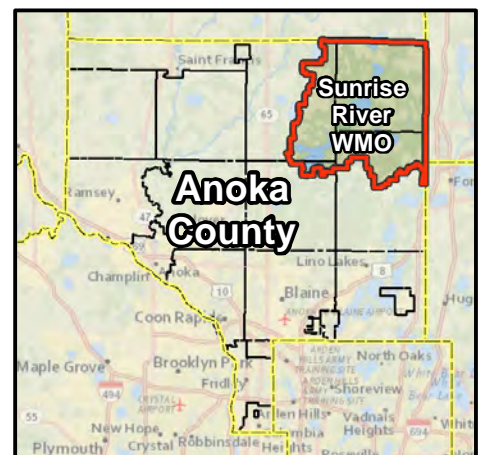
DNR Lakes of Phosphorus Sensitivity Significance

- Impaired
- Highest
- Higher
- High

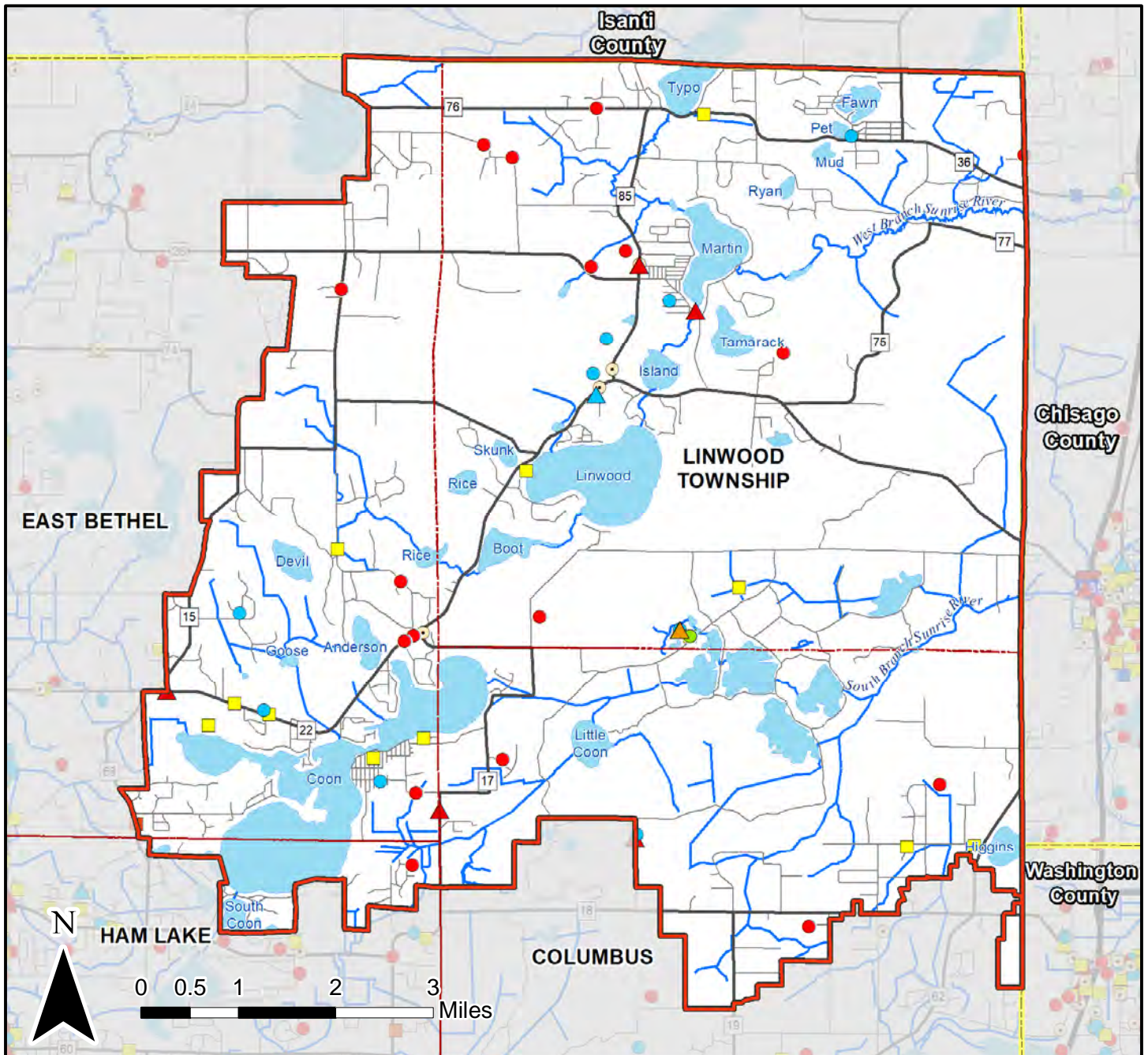
Map 21 Sources:

MnDNR Lakes of Phosphorus Sensitivity Significance, 2016
USGS National Hydrography Dataset, 2018
MnDNR 24k Lakes, 2003

This is a reference map that depicts information compiled from several sources and its completeness or total accuracy cannot be guaranteed. If there are any questions, please contact the Anoka Conservation District at (763) 434-2030.



Map 22: Environmental Hazards



Sunrise River WMO

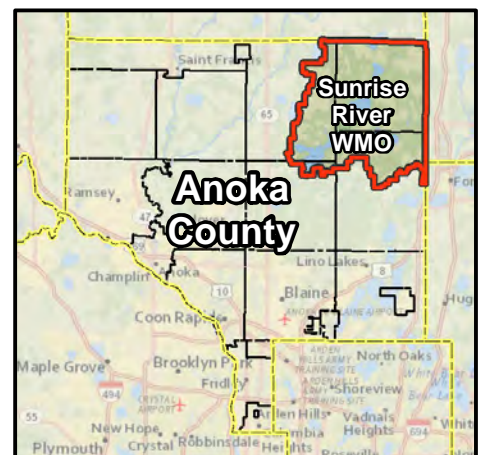
Active Sites - Program Name

- Multiple Programs
- Air Quality
- Environmental Review
- Feedlots
- Hazardous Waste
- Investigation and Cleanup
- Pollution Prevention
- Solid Waste
- Stormwater
- ▲ SSTS
- ▲ Tanks
- ▲ Water Quality

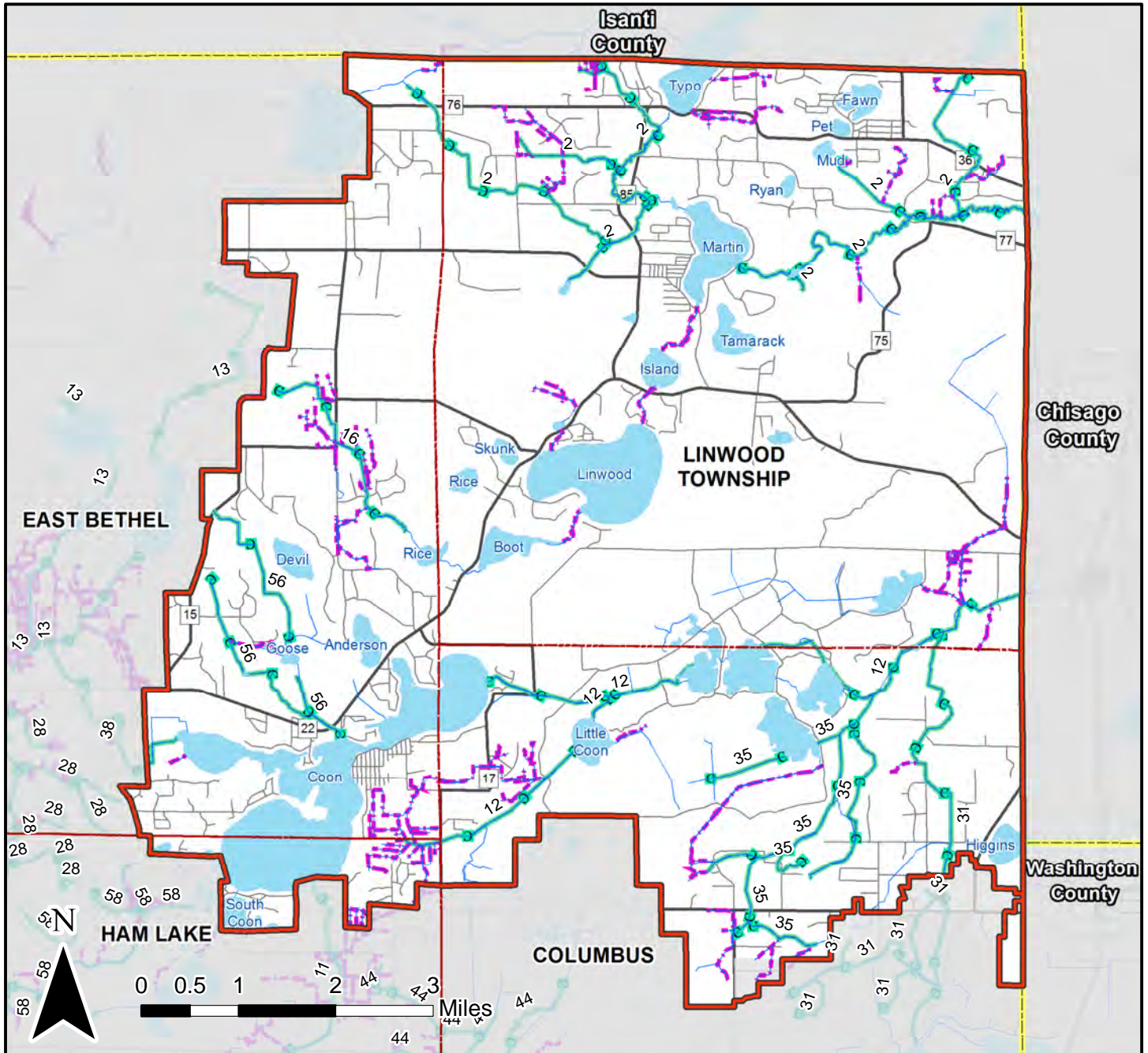
Map 22 Sources:

MPCA What's In My Neighborhood Sites, 2017
USGS National Hydrography Dataset, 2018
MnDNR 24k Lakes, 2003

This is a reference map that depicts information compiled from several sources and its completeness or total accuracy cannot be guaranteed. If there are any questions, please contact the Anoka Conservation District at (763) 434-2030.



Map 23: County and Private Ditches



Sunrise River WMO

Watercourses

Ditches

County Ditch

Private Ditch

Map 23

Sources:
Anoka County - county and private ditches
MN DNR - water courses

This is a reference map that depicts information compiled from several sources and its completeness or total accuracy cannot be guaranteed. If there are any questions, please contact the Anoka Conservation District at (763) 434-2030.

Anoka Co disclaimer: This information is for reference purposes only and is not suitable for legal, engineering or surveying purposes. Anoka Co does not guarantee the accuracy of this information, and the information is furnished on an "as is" basis with no representation or warranties, either express or implied, for the merchantability or fitness of the information. The preceding disclaimer is provided pursuant to MN Statutes 466.03, and the user of the information provided herein acknowledges that Anoka Co shall not be liable for any damages, and expressly waives all claims and agrees to defend, indemnify, and hold harmless Anoka Co from any and all claims brought by anyone who uses the information, its employees or agents or third parties that arise out of the user's access.

